

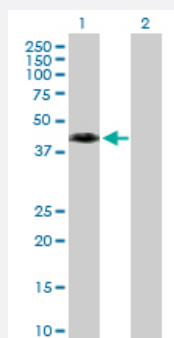
MaxPab®

WNT8A purified MaxPab rabbit polyclonal antibody (D01P)

Catalog # H00007478-D01P

Size 100 ug

Applications



Western Blot (Transfected lysate)

Western Blot analysis of WNT8A expression in transfected 293T cell line ([H00007478-T01](#)) by WNT8A MaxPab polyclonal antibody.

Lane 1: WNT8A transfected lysate(38.80 KDa).

Lane 2: Non-transfected lysate.

Specification

Product Description

Rabbit polyclonal antibody raised against a full-length human WNT8A protein.

Immunogen

WNT8A (NP_490645.1, 1 a.a. ~ 351 a.a) full-length human protein.

Sequence

MGNLFMLWAALGICCAAFSASAWSVNNFLITGPKAYLTYTTSVALGAQSGIEECKFQFAWERWN
CPENALQLSTHNRLRSATRETSFIHAISSAGVMYITKNCMGMDFENCGCDGSNNGKTGGHGWIW
GGCSDNVEFGERISKLFVDSLEKGDARALMNLHNNRAGRLAVRATMKRTCKCHGISGSCSIQT
CWLQLAEFREMMDYLKAKYDQALKIEMDKRQLRAGNSAEGHWVPAEAFPLPSAEAELEEFLEESPD
YTCNSSLGIYGTGRECLQNSHNTSRWERRSCGRLCTEGLQVEERKTEVISSCNCKFQWCCT
VKCDQCRHVVSKYYCARSPGSAQSLGKGSA

Host

Rabbit

Reactivity

Human

Interspecies Antigen Sequence

Rat (82)

Quality Control Testing

Antibody reactive against mammalian transfected lysate.

Storage Buffer

In 1x PBS, pH 7.4

Storage Instruction

Store at -20°C or lower. Aliquot to avoid repeated freezing and thawing.

Applications

- Western Blot (Transfected lysate)

Western Blot analysis of WNT8A expression in transfected 293T cell line ([H00007478-T01](#)) by WNT8A MaxPab polyclonal antibody.

Lane 1: WNT8A transfected lysate(38.80 KDa).

Lane 2: Non-transfected lysate.

[Protocol Download](#)

Gene Info — WNT8A

Entrez GeneID [7478](#)

GeneBank Accession# [NM_058244](#)

Protein Accession# [NP_490645.1](#)

Gene Name WNT8A

Gene Alias WNT8D

Gene Description wingless-type MMTV integration site family, member 8A

Omim ID [606360](#)

Gene Ontology [Hyperlink](#)

Gene Summary The WNT gene family consists of structurally related genes which encode secreted signaling proteins. These proteins have been implicated in oncogenesis and in several developmental processes, including regulation of cell fate and patterning during embryogenesis. This gene is a member of the WNT gene family, and may be implicated in development of early embryos as well as germ cell tumors. It encodes a protein which shows 81% amino acid identity to the mouse Wnt8A protein. [provided by RefSeq]

Other Designations OTTHUMP00000180556|WNT8d

Pathway

- [Basal cell carcinoma](#)

- [Hedgehog signaling pathway](#)
- [Melanogenesis](#)
- [Pathways in cancer](#)
- [Wnt signaling pathway](#)

Disease

- [Cleft Lip](#)
- [Cleft Palate](#)
- [Genetic Predisposition to Disease](#)