

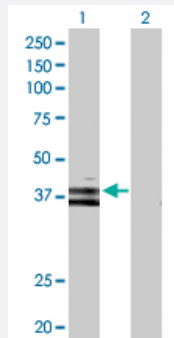
MaxPab®

WNT6 purified MaxPab rabbit polyclonal antibody (D01P)

Catalog # H00007475-D01P

Size 100 ug

Applications



Western Blot (Transfected lysate)

Western Blot analysis of WNT6 expression in transfected 293T cell line ([H00007475-T01](#)) by WNT6 MaxPab polyclonal antibody.

Lane 1: WNT6 transfected lysate(39.70 kDa).

Lane 2: Non-transfected lysate.

Specification

Product Description

Rabbit polyclonal antibody raised against a full-length human WNT6 protein.

Immunogen

WNT6 (NP_006513.1, 1 a.a. ~ 365 a.a) full-length human protein.

Sequence

MLPPLPSRLGLLLLLLCPAHVGGLWWAVGSPLVMDPTSICRKARRLAGRQAELCQAEPEVVAE
LARGARLGVRECQFQFRFRRWNCSSHSKAFGRILQQDIRETAFVFAITAAGASHAVTQACSMGEL
LQCGCQAPRGRAPPRPSGLPGTPGPPGPAGSPEGSAAWEWGGCGDDVDFGDEKSRLFMDA
RHKRGRGDIRALVQLHNNEAGRLAVRSHRTECKCHGLSGSCALRTCWQKLPPFREVGARLLER
FHGASRVMGTNDGKALLPAVRTLKPPGRADLLYAADSPDFCAPNRRTGSPGTRGRACNSSAPD
LSGCDLLCCGRGHRQESVQLEENCLCRFWCCVQCHRCRVRKELSLCL

Host

Rabbit

Reactivity

Human

Interspecies Antigen Sequence

Mouse (98); Rat (98)

Quality Control Testing

Antibody reactive against mammalian transfected lysate.

Storage Buffer

In 1x PBS, pH 7.4

Storage Instruction

Store at -20°C or lower. Aliquot to avoid repeated freezing and thawing.

Applications

- Western Blot (Transfected lysate)

Western Blot analysis of WNT6 expression in transfected 293T cell line ([H00007475-T01](#)) by WNT6 MaxPab polyclonal antibody.

Lane 1: WNT6 transfected lysate(39.70 KDa).

Lane 2: Non-transfected lysate.

[Protocol Download](#)

Gene Info — WNT6

Entrez GeneID [7475](#)

GeneBank Accession# [NM_006522](#)

Protein Accession# [NP_006513.1](#)

Gene Name WNT6

Gene Alias -

Gene Description wingless-type MMTV integration site family, member 6

Omim ID [604663](#)

Gene Ontology [Hyperlink](#)

Gene Summary

The WNT gene family consists of structurally related genes which encode secreted signaling proteins. These proteins have been implicated in oncogenesis and in several developmental processes, including regulation of cell fate and patterning during embryogenesis. This gene is a member of the WNT gene family. It is overexpressed in cervical cancer cell line and strongly coexpressed with another family member, WNT10A, in colorectal cancer cell line. The gene overexpression may play key roles in carcinogenesis. This gene and the WNT10A gene are clustered in the chromosome 2q35 region. The protein encoded by this gene is 97% identical to the mouse Wnt6 protein at the amino acid level. [provided by RefSeq]

Other Designations -

Pathway

- [Basal cell carcinoma](#)
- [Hedgehog signaling pathway](#)
- [Melanogenesis](#)
- [Pathways in cancer](#)
- [Wnt signaling pathway](#)

Disease

- [Cleft Lip](#)
- [Cleft Palate](#)
- [Genetic Predisposition to Disease](#)