

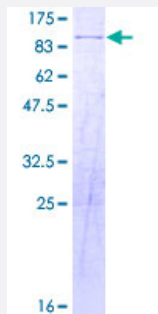
Full-Length

# WHSC2 (Human) Recombinant Protein (P01)

Catalog # H00007469-P01

Size 25 ug, 10 ug

## Applications



## Specification

### Product Description

Human WHSC2 full-length ORF ( NP\_005654.2, 1 a.a. - 528 a.a.) recombinant protein with GST-tag at N-terminal.

### Sequence

MASMRESDTGLWLHNKLGATDELWAPPSIASLLTAAVIDNIRLCFHGLSSAVKLKLLGLHLPRR  
TVDEMKGALMEIQLASLSDPWVLMVADILKSFPDTGSLNLEEEQNPVQDILGELREKVGECE  
EASAMLPLECQYLNKNALTTLAGPLTPPVKHQFQLKRKPKSATLRAELLQKSTETAQQLKRSAGVP  
FHAKGRGLLRKMDTTTPLKGIPKQAPFRSPTAPSVFSPTGNRTPIPPSRTLLRKERGKLLDISELD  
MVGAGREAKRRRKTLDAEVVEKPAKEETVVENATPDYAAGLVSTQKLGSLNNEPALPSTSYLPS  
TPSVVPASSYIPSSETPPAPSSREASRPPEEPSAPSPTLPAQFKQRAPMYNSGLSPATPTPAAPT  
SPLTPTTPPAVAPTTQTPPVAMVAPQTQAPAAQQPKKNLSLTREQMFAAQEMFKTANKVTRPEK  
ALILGFMAGSRENPCQEQQGDVIQKLSEHTEDLPKADGGSTTMLVDTVFEMNYATGQWTRFKKY  
KPMTNVS

### Host

Wheat Germ (in vitro)

### Theoretical MW (kDa)

83.7

### Interspecies Antigen Sequence

Mouse (95); Rat (95)

### Preparation Method

[in vitro wheat germ expression system](#)

### Purification

Glutathione Sepharose 4 Fast Flow

Quality Control Testing	12.5% SDS-PAGE Stained with Coomassie Blue.
Storage Buffer	50 mM Tris-HCl, 10 mM reduced Glutathione, pH=8.0 in the elution buffer.
Storage Instruction	Store at -80°C. Aliquot to avoid repeated freezing and thawing.
Note	Best use within three months from the date of receipt of this protein.

## Applications

- Enzyme-linked Immunoabsorbent Assay
- Western Blot (Recombinant protein)
- Antibody Production
- Protein Array

## Gene Info — WHSC2

Entrez GeneID	<a href="#">7469</a>
GeneBank Accession#	<a href="#">NM_005663.2</a>
Protein Accession#	<a href="#">NP_005654.2</a>
Gene Name	WHSC2
Gene Alias	FLJ10442, FLJ25112, NELF-A, NELFA, P/OKcl.15
Gene Description	Wolf-Hirschhorn syndrome candidate 2
Omim ID	<a href="#">606026</a>
Gene Ontology	<a href="#">Hyperlink</a>

Gene Summary	<p>This gene is expressed ubiquitously with higher levels in fetal than in adult tissues. It encodes a protein sharing 93% sequence identity with the mouse protein. Wolf-Hirschhorn syndrome (WHS) is a malformation syndrome associated with a hemizygous deletion of the distal short arm of chromosome 4. This gene is mapped to the 165 kb WHS critical region, and may play a role in the phenotype of the WHS or Pitt-Rogers-Danks syndrome. The encoded protein is found to be capable of reacting with HLA-A2-restricted and tumor-specific cytotoxic T lymphocytes, suggesting a target for use in specific immunotherapy for a large number of cancer patients. This protein has also been shown to be a member of the NELF (negative elongation factor) protein complex that participates in the regulation of RNA polymerase II transcription elongation. [provided by RefSeq]</p>
--------------	---

**Other Designations**

Wolf-Hirschhorn syndrome candidate 2 protein

**Disease**

- [Tobacco Use Disorder](#)