

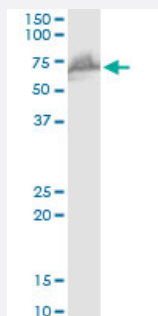
MaxPab®

# WHSC2 purified MaxPab mouse polyclonal antibody (B03P)

Catalog # H00007469-B03P

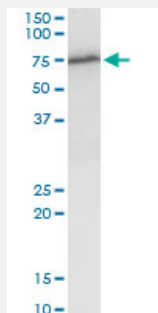
Size 50 ug

## Applications



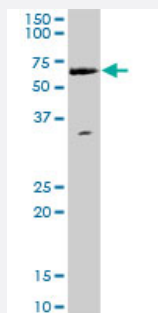
### Western Blot (Cell lysate)

WHSC2 MaxPab polyclonal antibody. Western Blot analysis of WHSC2 expression in Raw 264.7.



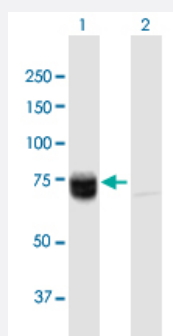
### Western Blot (Cell lysate)

WHSC2 MaxPab polyclonal antibody. Western Blot analysis of WHSC2 expression in NIH/3T3.



### Western Blot (Cell lysate)

WHSC2 MaxPab polyclonal antibody. Western Blot analysis of WHSC2 expression in Hela S3 NE.

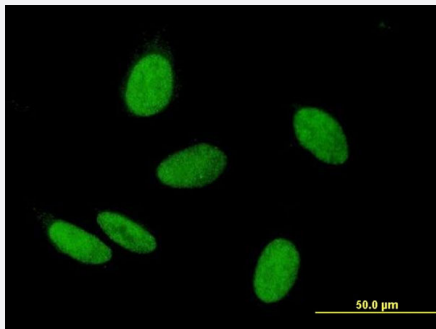


### Western Blot (Transfected lysate)

Western Blot analysis of WHSC2 expression in transfected 293T cell line ([H00007469-T02](#)) by WHSC2 MaxPab polyclonal antibody.

Lane 1: WHSC2 transfected lysate(58.08 KDa).

Lane 2: Non-transfected lysate.



## Immunofluorescence

Immunofluorescence of purified MaxPab antibody to WHSC2 on HeLa cell.  
[antibody concentration 10 ug/ml]

## Specification

<b>Product Description</b>	Mouse polyclonal antibody raised against a full-length human WHSC2 protein.
<b>Immunogen</b>	WHSC2 (NP_005654.2, 1 a.a. ~ 528 a.a) full-length human protein.
<b>Sequence</b>	MASMRESDTGLWLHNKLGATDELWAPPSIASLLTAAVIDNIRLCFHGLSSAVKCLKLLGLHLPRR TVDEMKGALMEIQLASLSDPWVLMVADILKSFPDTGSLNLEEEQNPNVQDILGELREKVGECEASAMLPLECYLNKNALTTLAGPLTPPVKHFQLKRKPKSATLRAELLQKSTETAQQLKRSAGVP FHAKGRGLLRKMDTTTPLKGIPKQAPFRSPTAPSVFSPTGNRTPIPPSRTLLRKERGVKLLDISELD MVGAGREAKRRRKTLD AEVVEKPAKEETVVENATPDYAAGLVSTQKLGSLNNEPALPSTSYLPS TPSVVPASSYPSSETPPAPSSREASRPPEEPSAPSPTLPAQFKQRAPMYNSGLSPATPTPAAPT SPLTPTTPPAVAPTTQTPPVAMVAPQTQAPAQQQPKKNLSLTREQMFAAQEMFKTANKVTRPEK ALILGFMAGSRENPCQEQQGDVIQIKLSEHTEDLPKADGGGSTTMLVDTVFEMNYATGQWTRFKKY KPMTNVS
<b>Host</b>	Mouse
<b>Reactivity</b>	Human, Mouse
<b>Interspecies Antigen Sequence</b>	Mouse (95); Rat (95)
<b>Quality Control Testing</b>	Antibody reactive against mammalian transfected lysate.
<b>Storage Buffer</b>	In 1x PBS, pH 7.4
<b>Storage Instruction</b>	Store at -20°C or lower. Aliquot to avoid repeated freezing and thawing.

## Applications

- Western Blot (Cell lysate)

WHSC2 MaxPab polyclonal antibody. Western Blot analysis of WHSC2 expression in Raw 264.7.

[Protocol Download](#)

- Western Blot (Cell lysate)

WHSC2 MaxPab polyclonal antibody. Western Blot analysis of WHSC2 expression in NIH/3T3.

[Protocol Download](#)

- Western Blot (Cell lysate)

WHSC2 MaxPab polyclonal antibody. Western Blot analysis of WHSC2 expression in Hela S3 NE.

[Protocol Download](#)

- Western Blot (Transfected lysate)

Western Blot analysis of WHSC2 expression in transfected 293T cell line ([H00007469-T02](#)) by WHSC2 MaxPab polyclonal antibody.

Lane 1: WHSC2 transfected lysate(58.08 KDa).

Lane 2: Non-transfected lysate.

[Protocol Download](#)

- Immunofluorescence

Immunofluorescence of purified MaxPab antibody to WHSC2 on HeLa cell. [antibody concentration 10 ug/ml]

## Gene Info — WHSC2

Entrez GeneID [7469](#)

GeneBank Accession# [NM\\_005663.2](#)

Protein Accession# [NP\\_005654.2](#)

Gene Name WHSC2

Gene Alias FLJ10442, FLJ25112, NELF-A, NELFA, P/OKcl.15

Gene Description Wolf-Hirschhorn syndrome candidate 2

Omim ID [606026](#)

Gene Ontology [Hyperlink](#)

**Gene Summary**

This gene is expressed ubiquitously with higher levels in fetal than in adult tissues. It encodes a protein sharing 93% sequence identity with the mouse protein. Wolf-Hirschhorn syndrome (WHS) is a malformation syndrome associated with a hemizygous deletion of the distal short arm of chromosome 4. This gene is mapped to the 165 kb WHS critical region, and may play a role in the phenotype of the WHS or Pitt-Rogers-Danks syndrome. The encoded protein is found to be capable of reacting with HLA-A2-restricted and tumor-specific cytotoxic T lymphocytes, suggesting a target for use in specific immunotherapy for a large number of cancer patients. This protein has also been shown to be a member of the NELF (negative elongation factor) protein complex that participates in the regulation of RNA polymerase II transcription elongation. [provided by RefSeq]

**Other Designations**

Wolf-Hirschhorn syndrome candidate 2 protein

**Disease**

- [Tobacco Use Disorder](#)