

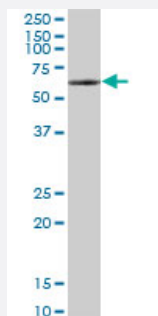
MaxPab®

WHSC2 purified MaxPab mouse polyclonal antibody (B01P)

Catalog # H00007469-B01P

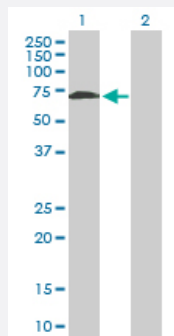
Size 50 ug

Applications



Western Blot (Cell lysate)

WHSC2 MaxPab polyclonal antibody. Western Blot analysis of WHSC2 expression in Jurkat.

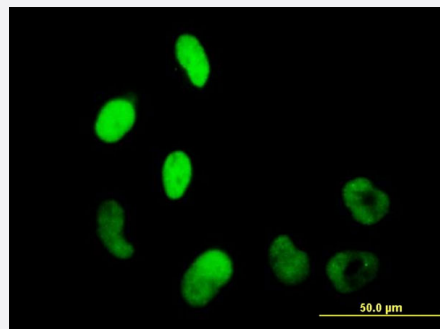


Western Blot (Transfected lysate)

Western Blot analysis of WHSC2 expression in transfected 293T cell line ([H00007469-T01](#)) by WHSC2 MaxPab polyclonal antibody.

Lane 1: WHSC2 transfected lysate(58.08 KDa).

Lane 2: Non-transfected lysate.



Immunofluorescence

Immunofluorescence of purified MaxPab antibody to WHSC2 on HeLa cell. [antibody concentration 10 ug/ml]

Specification

Product Description

Mouse polyclonal antibody raised against a full-length human WHSC2 protein.

Immunogen	WHSC2 (NP_005654.2, 1 a.a. ~ 528 a.a) full-length human protein.
Sequence	MASMRESDTGLWLHNKLGATDELWAPPSIASLLTAAVIDNIRLCFHGLSSAVKLLKLLGLHLPRR TVDEMKGALMEIIQLASLDSDPWVLMVADILKSFPDTGSLNLELEEQNPVQDILGELREKVGEC EASAMLPLECQYLNKNALTTLAGPLTPPVKHFQLKRKPKSATLRAELLQKSTETAQQLKRSAGVP FHAKEGRGLLRKMDTTTPLKGIPKQAPFRSPTAPSVFSPTGNRTPIPPSRTLLRKERGVKLLDISELD MVGAGREAKRRRKTLD AEVVEKPAKEETVVENATPDYAAGLVSTQKLGSLNNEPALPSTSYLPS TPSVVPASSYPSSETPPAPSSREASRPPEEPSAPSPTLPAQFKQRAPMYNSGLSPATPTPAAPT SPLTPTTPPAVAPTTQTPPVAMVAPQTQAPAQQQPKKNLSLTREQMFAAQEMFKTANKVTRPEK ALILGF MAGSRENPCQE QGDVIQIKLSEHTEDLPKADGGGSTTMLVDTVFEMNYATGQWTRFKKY KPMTNVS
Host	Mouse
Reactivity	Human
Interspecies Antigen Sequence	Mouse (95); Rat (95)
Quality Control Testing	Antibody reactive against mammalian transfected lysate.
Storage Buffer	In 1x PBS, pH 7.4
Storage Instruction	Store at -20°C or lower. Aliquot to avoid repeated freezing and thawing.

Applications

- Western Blot (Cell lysate)

WHSC2 MaxPab polyclonal antibody. Western Blot analysis of WHSC2 expression in Jurkat.

[Protocol Download](#)

- Western Blot (Transfected lysate)

Western Blot analysis of WHSC2 expression in transfected 293T cell line ([H00007469-T01](#)) by WHSC2 MaxPab polyclonal antibody.

Lane 1: WHSC2 transfected lysate(58.08 KDa).

Lane 2: Non-transfected lysate.

[Protocol Download](#)

- Immunofluorescence

Immunofluorescence of purified MaxPab antibody to WHSC2 on HeLa cell. [antibody concentration 10 ug/ml]

Gene Info — WHSC2

Entrez GeneID	7469
GeneBank Accession#	NM_005663.2
Protein Accession#	NP_005654.2
Gene Name	WHSC2
Gene Alias	FLJ10442, FLJ25112, NELF-A, NELFA, P/OKcl.15
Gene Description	Wolf-Hirschhorn syndrome candidate 2
Omim ID	606026
Gene Ontology	Hyperlink
Gene Summary	<p>This gene is expressed ubiquitously with higher levels in fetal than in adult tissues. It encodes a protein sharing 93% sequence identity with the mouse protein. Wolf-Hirschhorn syndrome (WHS) is a malformation syndrome associated with a hemizygous deletion of the distal short arm of chromosome 4. This gene is mapped to the 165 kb WHS critical region, and may play a role in the phenotype of the WHS or Pitt-Rogers-Danks syndrome. The encoded protein is found to be capable of reacting with HLA-A2-restricted and tumor-specific cytotoxic T lymphocytes, suggesting a target for use in specific immunotherapy for a large number of cancer patients. This protein has also been shown to be a member of the NELF (negative elongation factor) protein complex that participates in the regulation of RNA polymerase II transcription elongation. [provided by RefSeq]</p>
Other Designations	Wolf-Hirschhorn syndrome candidate 2 protein

Disease

- [Tobacco Use Disorder](#)