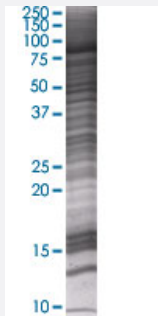


WHSC1 293T Cell Transient Overexpression Lysate(Denatured)

Catalog # H00007468-T01

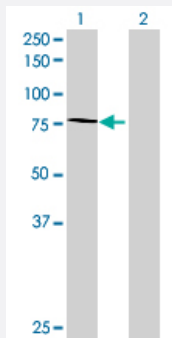
Size 100 uL

Applications



SDS-PAGE Gel

WHSC1 transfected lysate.



Western Blot

Lane 1: WHSC1 transfected lysate (71.28 KDa)

Lane 2: Non-transfected lysate.

Specification

Transfected Cell Line	293T
Plasmid	pCMV-WHSC1 full-length
Host	Human
Theoretical MW (kDa)	71.28
Interspecies Antigen Sequence	Mouse (86); Rat (85)

Quality Control Testing

Transient overexpression cell lysate was tested with Anti-WHSC1 antibody ([H00007468-B01](#)) by Western Blots.
SDS-PAGE Gel
WHSC1 transfected lysate.
Western Blot
Lane 1: WHSC1 transfected lysate (71.28 KDa)
Lane 2: Non-transfected lysate.

Storage Buffer

1X Sample Buffer (50 mM Tris-HCl, 2% SDS, 10% glycerol, 300 mM 2-mercaptoethanol, 0.01% Bromophenol blue)

Storage Instruction

Store at -80°C. Aliquot to avoid repeated freezing and thawing.

Applications

- Western Blot

Gene Info — WHSC1

Entrez GeneID[7468](#)**GeneBank Accession#**[NM_133334.2](#)**Protein Accession#**[NP_579889.1](#)**Gene Name**

WHSC1

Gene Alias

FLJ23286, KIAA1090, MGC176638, MMSET, NSD2, REIIBP, TRX5, WHS

Gene Description

Wolf-Hirschhorn syndrome candidate 1

Omim ID[602952](#)**Gene Ontology**[Hyperlink](#)**Gene Summary**

This gene encodes a protein that contains four domains present in other developmental proteins: a PWWP domain, an HMG box, a SET domain, and a PHD-type zinc finger. It is expressed ubiquitously in early development. Wolf-Hirschhorn syndrome (WHS) is a malformation syndrome associated with a hemizygous deletion of the distal short arm of chromosome 4. This gene maps to the 165 kb WHS critical region and has also been involved in the chromosomal translocation t(4;14)(p16.3;q32.3) in multiple myelomas. Alternative splicing of this gene results in multiple transcript variants encoding different isoforms. Some transcript variants are nonsense-mediated mRNA (NMD) decay candidates, hence not represented as reference sequences. [provided by RefSeq]

Other Designations

IL5 promoter REll region-binding protein|OTTHUMP00000149955|OTTHUMP00000159146|Wolf
-Hirschhorn syndrome candidate 1 protein|multiple myeloma SET domain containing protein type I
|||trithorax/ash1-related protein 5

Pathway

- [Lysine degradation](#)

Disease

- [Cleft Lip](#)
- [Cleft Palate](#)
- [Kidney Failure](#)