

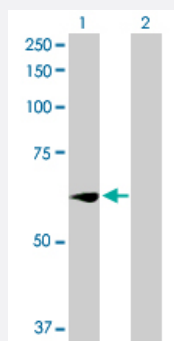
MaxPab®

WEE1 purified MaxPab rabbit polyclonal antibody (D01P)

Catalog # H00007465-D01P

Size 100 ug

Applications

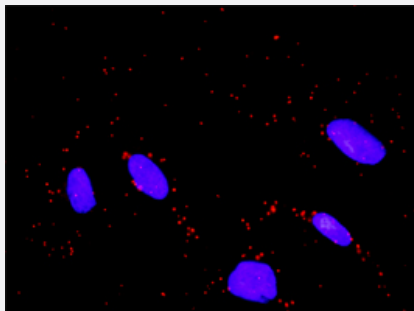


Western Blot (Transfected lysate)

Western Blot analysis of WEE1 expression in transfected 293T cell line ([H00007465-T02](#)) by WEE1 MaxPab polyclonal antibody.

Lane 1: WEE1 transfected lysate(71.70 KDa).

Lane 2: Non-transfected lysate.



In situ Proximity Ligation Assay (Cell)

Proximity Ligation Analysis of protein-protein interactions between WEE1 and FBXW11. HeLa cells were stained with anti-WEE1 rabbit purified polyclonal 1:1200 and anti-FBXW11 mouse monoclonal antibody 1:50. Each red dot represents the detection of protein-protein interaction complex, and nuclei were counterstained with DAPI (blue).

Specification

Product Description

Rabbit polyclonal antibody raised against a full-length human WEE1 protein.

Immunogen

WEE1 (AAH51831.1, 1 a.a. ~ 646 a.a) full-length human protein.

Sequence	MSFLSRQQPPPPRRAGAACTLRQKLIFSPCSDCEEEEEEEEEEGSGHSTGEDSAFQEPDSPLP PARSPTEPGPERRRRSPGPAPGSPGELEEDLLLPGACPGADEAGGGAEGDSWEEEGFGSSSPV KSPAAPYFLGSSFSPVRCGGPGDASPRGCGARRAGEGRRSPRPDHPGTPPHKTFRKLRLFDTP HTPKSLLSKARGIDSSSVKLRGSSLFMDTEKSGKREFDVRQTPQVNINPFTPDSLLLHSSGQCRR RKRTYWNDS CGEDMEASDYELEDETRPAKRITTESNMKSRYTTEFHELEKIGSGEFGSVFKCVK RLDGCYAIKRSKKPLAGSVDEQNALREVYAHAVLGQSHSHVVRYFSAWAEDDHMLIQNEYRNGGS LADAISENYRIMSYFKEAELKDLLLQVGRGLRYIHMSLVHMDIKPSNIFISRTSIPNAASEEGDEDD WASNKVMFKIGDLGHVTRISSPQVEEGDSRFLANEVLQENYTHLPKADIFALALTVVCAAGAEPL PRNGDQWHEIRQGRLPRIPQVLSQEFTELLKVMHPDPERRPSAMALVKHSVLLSASRKSAEQLRI ELNAEKFKNSLLQKELKKAQMAKAAAEERALFTDRMATRSTTQSNRTSRLIGKKMNRSVSLTIY
Host	Rabbit
Reactivity	Human
Interspecies Antigen Sequence	Mouse (90); Rat (91)
Quality Control Testing	Antibody reactive against mammalian transfected lysate.
Storage Buffer	In 1x PBS, pH 7.4
Storage Instruction	Store at -20°C or lower. Aliquot to avoid repeated freezing and thawing.

Applications

- Western Blot (Transfected lysate)

Western Blot analysis of WEE1 expression in transfected 293T cell line ([H00007465-T02](#)) by WEE1 MaxPab polyclonal antibody.

Lane 1: WEE1 transfected lysate(71.70 KDa).

Lane 2: Non-transfected lysate.

[Protocol Download](#)

- In situ* Proximity Ligation Assay (Cell)

Proximity Ligation Analysis of protein-protein interactions between WEE1 and FBXW11. HeLa cells were stained with anti-WEE1 rabbit purified polyclonal 1:1200 and anti-FBXW11 mouse monoclonal antibody 1:50. Each red dot represents the detection of protein-protein interaction complex, and nuclei were counterstained with DAPI (blue).

Gene Info — WEE1

Entrez GeneID

[7465](#)

GeneBank Accession#

[BC051831.1](#)

Protein Accession#	AAH51831.1
Gene Name	WEE1
Gene Alias	DKFZp686l18166, FLJ16446, WEE1A, WEE1hu
Gene Description	WEE1 homolog (S. pombe)
Omim ID	193525
Gene Ontology	Hyperlink
Gene Summary	This gene encodes a nuclear protein, which is a tyrosine kinase belonging to the Ser/Thr family of protein kinases. This protein catalyzes the inhibitory tyrosine phosphorylation of CDC2/cyclin B kinase, and appears to coordinate the transition between DNA replication and mitosis by protecting the nucleus from cytoplasmically activated CDC2 kinase. [provided by RefSeq]
Other Designations	WEE1+ homolog wee1 tyrosine kinase wee1-like protein kinase

Pathway

- [Cell cycle](#)

Disease

- [Breast cancer](#)
- [Breast Neoplasms](#)
- [Cardiovascular Diseases](#)
- [Diabetes Mellitus](#)
- [Edema](#)
- [Genetic Predisposition to Disease](#)