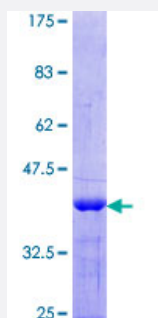


LAT2 (Human) Recombinant Protein (Q01)

Catalog # H00007462-Q01

Size 25 ug, 10 ug

Applications



Specification

| | |
|--------------------------------------|--|
| Product Description | Human LAT2 partial ORF (NP_071323.1, 144 a.a. - 242 a.a.) recombinant protein with GST-tag at N-terminal. |
| Sequence | QKTTETGAQQEGIGGLCRGDLSSLALKTGPTSGLCPSASPEEDEESEDYQNSASIHQWRESRK VMGQLQREASPGPVGSPDEEDGEPDYVNGEVAATE |
| Host | Wheat Germ (in vitro) |
| Theoretical MW (kDa) | 36.63 |
| Interspecies Antigen Sequence | Mouse (56); Rat (59) |
| Preparation Method | in vitro wheat germ expression system |
| Purification | Glutathione Sepharose 4 Fast Flow |
| Quality Control Testing | 12.5% SDS-PAGE Stained with Coomassie Blue. |
| Storage Buffer | 50 mM Tris-HCl, 10 mM reduced Glutathione, pH=8.0 in the elution buffer. |
| Storage Instruction | Store at -80°C. Aliquot to avoid repeated freezing and thawing. |
| Note | Best use within three months from the date of receipt of this protein. |

Applications

- Enzyme-linked Immunoabsorbent Assay
- Western Blot (Recombinant protein)
- Antibody Production
- Protein Array

Gene Info — LAT2

Entrez GeneID [7462](#)

GeneBank Accession# [NM_022040](#)

Protein Accession# [NP_071323.1](#)

Gene Name LAT2

Gene Alias HSPC046, LAB, NTAL, WBSCR15, WBSCR5, WSCR5

Gene Description linker for activation of T cells family, member 2

Omim ID [605719](#)

Gene Ontology [Hyperlink](#)

Gene Summary This gene is one of the contiguous genes at 7q11.23 commonly deleted in Williams syndrome, a multisystem developmental disorder. This gene consists of at least 14 exons, and its alternative splicing generates 3 transcript variants, all encoding the same protein. [provided by RefSeq]

Other Designations OTTHUMP00000160648|OTTHUMP00000179118|OTTHUMP00000179119|Williams-Beuren syndrome chromosome region 15|Williams-Beuren syndrome chromosome region 5|linker for activation of B cells|linker for activation of T cells family member 2|non-T cell activation lin