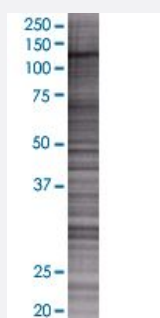


# CLIP2 293T Cell Transient Overexpression Lysate(Denatured)

Catalog # H00007461-T01

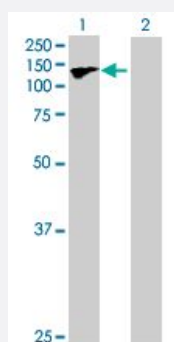
Size 100 uL

## Applications



### SDS-PAGE Gel

CLIP2 transfected lysate.



### Western Blot

Lane 1: CLIP2 transfected lysate ( 115.06 KDa)

Lane 2: Non-transfected lysate.

## Specification

**Transfected Cell Line** 293T

**Plasmid** pCMV-CYLN2 full-length

**Host** Human

**Theoretical MW (kDa)** 115.06

**Interspecies Antigen Sequence** Mouse (91)

## Quality Control Testing

Transient overexpression cell lysate was tested with Anti-CYLN2 antibody ([H00007461-B01](#)) by Western Blots.  
SDS-PAGE Gel  
CLIP2 transfected lysate.  
Western Blot  
Lane 1: CLIP2 transfected lysate ( 115.06 KDa)  
Lane 2: Non-transfected lysate.

## Storage Buffer

1X Sample Buffer (50 mM Tris-HCl, 2% SDS, 10% glycerol, 300 mM 2-mercaptoethanol, 0.01% Bromophenol blue)

## Storage Instruction

Store at -80°C. Aliquot to avoid repeated freezing and thawing.

## Applications

- Western Blot

## Gene Info — CLIP2

## Entrez GeneID

[7461](#)

## GeneBank Accession#

[BC148702](#)

## Protein Accession#

[AA48703.1](#)

## Gene Name

CLIP2

## Gene Alias

CLIP, CLIP-115, CYLN2, KIAA0291, MGC11333, WBSCR3, WBSCR4, WSCR3, WSCR4

## Gene Description

CAP-GLY domain containing linker protein 2

## Omim ID

[603432](#)

## Gene Ontology

[Hyperlink](#)

## Gene Summary

The protein encoded by this gene belongs to the family of cytoplasmic linker proteins, which have been proposed to mediate the interaction between specific membranous organelles and microtubules. This protein was found to associate with both microtubules and an organelle called the dendritic lamellar body. This gene is hemizygotously deleted in Williams syndrome, a multisystem developmental disorder caused by the deletion of contiguous genes at 7q11.23. Alternative splicing of this gene generates 2 transcript variants. [provided by RefSeq]

## Other Designations

OTTHUMP00000160724|Williams-Beuren syndrome chromosome region 3|Williams-Beuren syndrome chromosome region 4|cytoplasmic linker 2

## Disease

- [Tobacco Use Disorder](#)