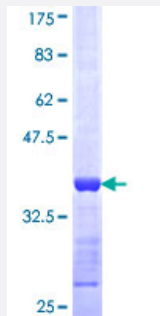


CLIP2 (Human) Recombinant Protein (Q01)

Catalog # H00007461-Q01

Size 25 ug, 10 ug

Applications



Specification

Product Description	Human CLIP2 partial ORF (NP_003379, 946 a.a. - 1046 a.a.) recombinant protein with GST-tag at N-terminal.
Sequence	LKDDIRGLREKLTGLDKEKSLSDQRRYSLIDRSSAPELLRLQHQLMSTEDALRDALDQAQQVEKL MEAMRSCPDKAQTIGNSGSANGIHQQDKAQKQEDKH
Host	Wheat Germ (in vitro)
Theoretical MW (kDa)	36.85
Interspecies Antigen Sequence	Mouse (83)
Preparation Method	in vitro wheat germ expression system
Purification	Glutathione Sepharose 4 Fast Flow
Quality Control Testing	12.5% SDS-PAGE Stained with Coomassie Blue.
Storage Buffer	50 mM Tris-HCl, 10 mM reduced Glutathione, pH=8.0 in the elution buffer.
Storage Instruction	Store at -80°C. Aliquot to avoid repeated freezing and thawing.
Note	Best use within three months from the date of receipt of this protein.

Applications

- Enzyme-linked Immunoabsorbent Assay
- Western Blot (Recombinant protein)
- Antibody Production
- Protein Array

Gene Info — CLIP2

Entrez GeneID	7461
GeneBank Accession#	NM_003388
Protein Accession#	NP_003379
Gene Name	CLIP2
Gene Alias	CLIP, CLIP-115, CYLN2, KIAA0291, MGC11333, WBSCR3, WBSCR4, WSCR3, WSCR4
Gene Description	CAP-GLY domain containing linker protein 2
Omim ID	603432
Gene Ontology	Hyperlink
Gene Summary	The protein encoded by this gene belongs to the family of cytoplasmic linker proteins, which have been proposed to mediate the interaction between specific membranous organelles and microtubules. This protein was found to associate with both microtubules and an organelle called the dendritic lamellar body. This gene is hemizygotously deleted in Williams syndrome, a multisystem developmental disorder caused by the deletion of contiguous genes at 7q11.23. Alternative splicing of this gene generates 2 transcript variants. [provided by RefSeq]
Other Designations	OTTHUMP00000160724 Williams-Beuren syndrome chromosome region 3 Williams-Beuren syndrome chromosome region 4 cytoplasmic linker 2

Disease

- [Tobacco Use Disorder](#)