

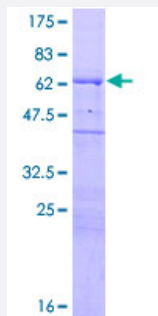
Full-Length

WASPIP (Human) Recombinant Protein (P01)

Catalog # H00007456-P01

Size 25 ug, 10 ug

Applications



Specification

Product Description	Human WASPIP full-length ORF (AAH02914.1, 1 a.a. - 358 a.a.) recombinant protein with GST-tag at N-terminal.
Sequence	MPVPPPPAPPPPTFALANTEKPTLNKTEQAGRNALLSDISKGKKLKKTVTNDRSAPILDKPKGA GAGGGGGGFGGGGGFGGGGGGGGGGSFGGGGPPGLGGLFQAGMPKLRSTANRDNHSGGSR PPLLPPGGRSTSAKPFSPPSGPGRFPVSPGHRSGPPEPQRNRMPPRPDVGSKPDSIPPPVP STPRPIQSSLHNRGSPPVPGGPRQPSPGPTPPPPPVDRPPGRSGPLPPPPVSRNGSTSRALP ATPQLPSRSGVDSRSGPRPLPPDRPSAGAPPPPPSTSIKNGFQDSPCEDEWESRFYFHPIS DLPPPEPVQTTKSYPSKLARNESRSGSNRRERGAAPLPPIPR
Host	Wheat Germ (in vitro)
Theoretical MW (kDa)	62.9
Interspecies Antigen Sequence	Mouse (87); Rat (86)
Preparation Method	in vitro wheat germ expression system
Purification	Glutathione Sepharose 4 Fast Flow
Quality Control Testing	12.5% SDS-PAGE Stained with Coomassie Blue.
Storage Buffer	50 mM Tris-HCl, 10 mM reduced Glutathione, pH=8.0 in the elution buffer.

Storage Instruction

Store at -80°C. Aliquot to avoid repeated freezing and thawing.

Note

Best use within three months from the date of receipt of this protein.

Applications

- Enzyme-linked Immunoabsorbent Assay
- Western Blot (Recombinant protein)
- Antibody Production
- Protein Array

Gene Info — WIPF1

Entrez GeneID[7456](#)**GeneBank Accession#**[BC002914.2](#)**Protein Accession#**[AAH02914.1](#)**Gene Name**

WIPF1

Gene Alias

MGC111041, PRPL-2, WASPIP, WIP

Gene Description

WAS/WASL interacting protein family, member 1

Omim ID[602357](#)**Gene Ontology**[Hyperlink](#)**Gene Summary**

This gene encodes a protein that plays an important role in the organization of the actin cytoskeleton. The encoded protein binds to a region of Wiskott-Aldrich syndrome protein that is frequently mutated in Wiskott-Aldrich syndrome, an X-linked recessive disorder. Impairment of the interaction between these two proteins may contribute to the disease. Two transcript variants encoding the same protein have been identified for this gene. [provided by RefSeq]

Other Designations

OTTHUMP00000163178|Wiskott-Aldrich syndrome protein interacting protein