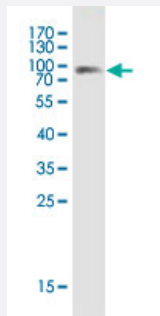


VIM monoclonal antibody (M15), clone 2N6

Catalog # H00007431-M15

Size 100 ug

Applications



Western Blot detection against Immunogen.

Specification

Product Description Mouse monoclonal antibody raised against human VIM.

Immunogen A synthetic peptide corresponding to human VIM

Sequence RQDV DNASLARLDL ERKVES

Host Mouse

Reactivity Human

Interspecies Antigen Sequence Mouse (100); Rat (100)

Isotype IgG2a Kappa

Quality Control Testing Antibody Reactive Against Recombinant Protein.
Western Blot detection against Immunogen.

Storage Buffer In 1x PBS, pH 7.4

Storage Instruction Store at -20°C or lower. Aliquot to avoid repeated freezing and thawing.

Applications

- Western Blot (Recombinant protein)

[Protocol Download](#)

- ELISA

Gene Info — VIM

Entrez GeneID [7431](#)

GeneBank Accession# [NM_003380.5](#)

Protein Accession# [NP_003371.2](#)

Gene Name VIM

Gene Alias FLJ36605

Gene Description vimentin

Omim ID [193060](#)

Gene Ontology [Hyperlink](#)

Gene Summary This gene encodes a member of the intermediate filament family. Intermediate filamentents, along with microtubules and actin microfilaments, make up the cytoskeleton. The protein encoded by thi s gene is responsible for maintaining cell shape, integrity of the cytoplasm, and stabilizing cytoske letal interactions. It is also involved in the immune response, and controls the transport of low-dens ity lipoprotein (LDL)-derived cholesterol from a lysosome to the site of esterification. It functions a s an organizer of a number of critical proteins involved in attachment, migration, and cell signaling. Mutations in this gene causes a dominant, pulverulent cataract

Other Designations OTTHUMP00000019224

Disease

- [Alzheimer disease](#)
- [Anorexia Nervosa](#)
- [Bulimia](#)
- [Cognition](#)

- [Genetic Predisposition to Disease](#)