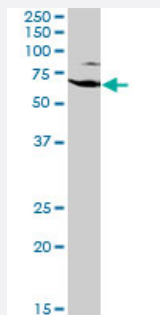


EZR monoclonal antibody (M04), clone 1E11

Catalog # H00007430-M04

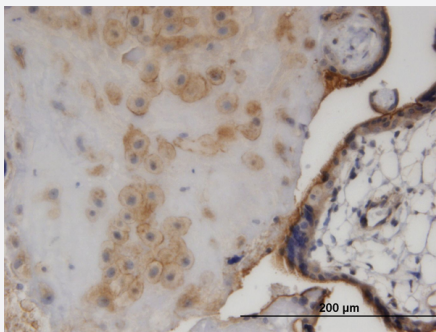
Size 100 ug

Applications



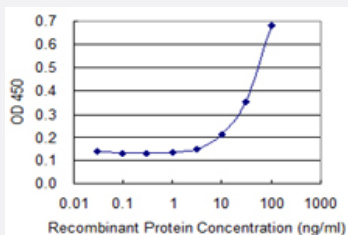
Western Blot (Cell lysate)

VIL2 monoclonal antibody (M04), clone 1E11. Western Blot analysis of VIL2 expression in HepG2 (Cat # L019V1).



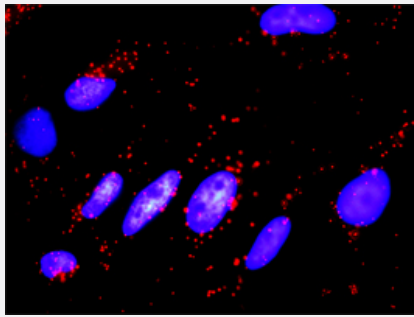
Immunohistochemistry (Formalin/PFA-fixed paraffin-embedded sections)

Immunoperoxidase of monoclonal antibody to EZR on formalin-fixed paraffin-embedded human placenta. [antibody concentration 3 ug/ml]



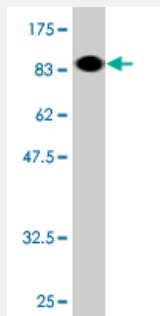
Sandwich ELISA (Recombinant protein)

Detection limit for recombinant GST tagged EZR is 3 ng/ml as a capture antibody.



In situ Proximity Ligation Assay (Cell)

Proximity Ligation Analysis of protein-protein interactions between FADD and EZR. HeLa cells were stained with anti-FADD rabbit purified polyclonal 1:1200 and anti-EZR mouse monoclonal antibody 1:50. Each red dot represents the detection of protein-protein interaction complex, and nuclei were counterstained with DAPI (blue).



Western Blot detection against Immunogen (89.98 KDa) .

Specification

Product Description	Mouse monoclonal antibody raised against a full-length recombinant VIL2.
Immunogen	EZR (AAH13903, 1 a.a. ~ 586 a.a) full-length recombinant protein with GST tag. MW of the GST tag alone is 26 KDa.
Sequence	MPKPINVRVTTMDAELEFAIQPNTTGKQLFDQVVKITGLREVWYFGLHYVDNKGFTWLKLDKKV SAQEVVRKENPLQFKFRAKFYPEDVAEELIQDITQKLFFLQVKEGILSDEIYCPPETAVLLGSYAVQA KFGDYNKEVHKSGYLSSERLIPQRVMDQHKLTRDQWEDRIQVWHAEHARGMLKDNAMLEYLKIAQ DLEMYGINYFEIKNKKGTDLWLGVDALGLNIEKDDKLTPIKIGFPWSEIRNISFNDKKFVIKPIDKKAP DFVIFYAPRLRINKRILQLCMGNHELIMRRRKPDITIEVQQMKAQAREEKHQKQLERQQLETEKKRR ETVEREKEQMMREKEELMLRLQDYEEKTKKAERELSEQIRALQLEEERKRAQEEAERLEADRM AALRAKEELERQAVDQIKSQEQLAAELAEYAKIALLEEARRRKEDEVEEWQHRAKEAQDDLK TKEELHLVMTAPPPPPPPVYEPVSYHVQESLQDEGAEPTGYSAEELSSEGIRDDRNEEKRITEAEK NERVQRQLLTLSSELSQARDENKRTHNDIIHNENMRQGRDKYKTLRQIRQGNTKQRIDEFEAL
Host	Mouse
Reactivity	Human
Interspecies Antigen Sequence	Mouse (97); Rat (96)
Isotype	IgG2b Kappa
Quality Control Testing	Antibody Reactive Against Recombinant Protein. Western Blot detection against Immunogen (89.98 KDa) .

Storage Buffer

In 1x PBS, pH 7.4

Storage Instruction

Store at -20°C or lower. Aliquot to avoid repeated freezing and thawing.

Applications

- Western Blot (Cell lysate)

VIL2 monoclonal antibody (M04), clone 1E11. Western Blot analysis of VIL2 expression in HepG2 (Cat # L019V1).

[Protocol Download](#)

- Western Blot (Recombinant protein)

[Protocol Download](#)

- Immunohistochemistry (Formalin/PFA-fixed paraffin-embedded sections)

Immunoperoxidase of monoclonal antibody to EZR on formalin-fixed paraffin-embedded human placenta. [antibody concentration 3 ug/ml]

[Protocol Download](#)

- Sandwich ELISA (Recombinant protein)

Detection limit for recombinant GST tagged EZR is 3 ng/ml as a capture antibody.

[Protocol Download](#)

- ELISA

- In situ* Proximity Ligation Assay (Cell)

Proximity Ligation Analysis of protein-protein interactions between FADD and EZR. HeLa cells were stained with anti-FADD rabbit purified polyclonal 1:1200 and anti-EZR mouse monoclonal antibody 1:50. Each red dot represents the detection of protein-protein interaction complex, and nuclei were counterstained with DAPI (blue).

Gene Info — EZR

Entrez GeneID[7430](#)**GeneBank Accession#**[BC013903](#)**Protein Accession#**[AAH13903](#)**Gene Name**

EZR

Gene Alias	CVIL, CVL, DKFZp762H157, FLJ26216, MGC1584, VIL2
Gene Description	ezrin
Omim ID	123900
Gene Ontology	Hyperlink
Gene Summary	The cytoplasmic peripheral membrane protein encoded by this gene functions as a protein-tyrosine kinase substrate in microvilli. As a member of the ERM protein family, this protein serves as an intermediate between the plasma membrane and the actin cytoskeleton. This protein plays a key role in cell surface structure adhesion, migration and organization, and it has been implicated in various human cancers. A pseudogene located on chromosome 3 has been identified for this gene. Alternatively spliced variants have also been described for this gene. [provided by RefSeq]
Other Designations	OTTHUMP00000017506 OTTHUMP00000017507 cytovillin 2 villin 2 (ezrin)

Pathway

- [Leukocyte transendothelial migration](#)
- [Pathogenic Escherichia coli infection - EHEC](#)
- [Regulation of actin cytoskeleton](#)

Disease

- [Asthma](#)
- [Cardiovascular Diseases](#)
- [Diabetes Mellitus](#)
- [Edema](#)
- [Genetic Predisposition to Disease](#)
- [Hypersensitivity](#)
- [Lung Neoplasms](#)
- [Ovarian Neoplasms](#)
- [Pulmonary Disease](#)
- [Tobacco Use Disorder](#)

- [Urinary Bladder Neoplasms](#)
- [Werner syndrome](#)