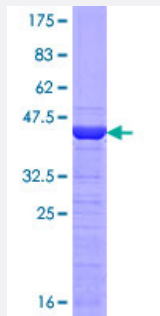


VCP (Human) Recombinant Protein (Q02)

Catalog # H00007415-Q02

Size 25 ug, 10 ug

Applications



Specification

| | |
|-------------------------------|---|
| Product Description | Human VCP partial ORF (NP_009057.1, 1 a.a. - 110 a.a.) recombinant protein with GST-tag at N-terminal. |
| Sequence | MASGADSKGDDLSTAILKQKNRPNRLIVDEAINEDNSVVSLSQPKMDELQLFRGDTVLLKGKKRR EAVCMLSDDTCSDEKIRMNRVVRNNLRVRLGDVISIQPCPDVKY |
| Host | Wheat Germ (in vitro) |
| Theoretical MW (kDa) | 37.84 |
| Interspecies Antigen Sequence | Mouse (100); Rat (100) |
| Preparation Method | in vitro wheat germ expression system |
| Purification | Glutathione Sepharose 4 Fast Flow |
| Quality Control Testing | 12.5% SDS-PAGE Stained with Coomassie Blue. |
| Storage Buffer | 50 mM Tris-HCl, 10 mM reduced Glutathione, pH=8.0 in the elution buffer. |
| Storage Instruction | Store at -80°C. Aliquot to avoid repeated freezing and thawing. |
| Note | Best use within three months from the date of receipt of this protein. |

Applications

- Enzyme-linked Immunoabsorbent Assay
- Western Blot (Recombinant protein)
- Antibody Production
- Protein Array

Gene Info — VCP

Entrez GeneID [7415](#)

GeneBank Accession# [NM_007126](#)

Protein Accession# [NP_009057.1](#)

Gene Name VCP

Gene Alias IBMPFD, MGC131997, MGC148092, MGC8560, TERA, p97

Gene Description valosin-containing protein

Omim ID [167320](#) [601023](#)

Gene Ontology [Hyperlink](#)

Gene Summary The protein encoded by this gene is a member of a family that includes putative ATP-binding proteins involved in vesicle transport and fusion, 26S proteasome function, and assembly of peroxisomes. This protein, as a structural protein, is associated with clathrin, and heat-shock protein Hsc70, to form a complex. It has been implicated in a number of cellular events that are regulated during mitosis, including homotypic membrane fusion, spindle pole body function, and ubiquitin-dependent protein degradation. [provided by RefSeq]

Other Designations transitional endoplasmic reticulum ATPase|yeast Cdc48p homolog

Disease

- [Amyotrophic Lateral Sclerosis](#)
- [Cardiovascular Diseases](#)
- [Dementia](#)

- [Diabetes Mellitus](#)
- [Edema](#)
- [Genetic Predisposition to Disease](#)