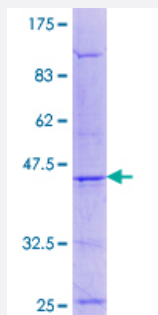


UFD1L (Human) Recombinant Protein (Q01)

Catalog # H00007353-Q01

Size 25 ug, 10 ug

Applications



Specification

Product Description	Human UFD1L partial ORF (NP_005650.2, 208 a.a. - 307 a.a.) recombinant protein with GST-tag at N-terminal.
Sequence	ESTEGEADHSGYAGELGFRAFSGSGNRLDGKKKGVEPSPSPIKPGDIKRGIPNYEFKLGKITFIRN SRPLVKKVEEDEAGGRFVAFSGEGQSLRKKGRKP
Host	Wheat Germ (in vitro)
Theoretical MW (kDa)	36.74
Interspecies Antigen Sequence	Mouse (97); Rat (97)
Preparation Method	in vitro wheat germ expression system
Purification	Glutathione Sepharose 4 Fast Flow
Quality Control Testing	12.5% SDS-PAGE Stained with Coomassie Blue.
Storage Buffer	50 mM Tris-HCl, 10 mM reduced Glutathione, pH=8.0 in the elution buffer.
Storage Instruction	Store at -80°C. Aliquot to avoid repeated freezing and thawing.
Note	Best use within three months from the date of receipt of this protein.

Applications

- Enzyme-linked Immunoabsorbent Assay
- Western Blot (Recombinant protein)
- Antibody Production
- Protein Array

Gene Info — UFD1L

Entrez GeneID [7353](#)

GeneBank Accession# [NM_005659](#)

Protein Accession# [NP_005650.2](#)

Gene Name UFD1L

Gene Alias UFD1

Gene Description ubiquitin fusion degradation 1 like (yeast)

Omim ID [601754](#)

Gene Ontology [Hyperlink](#)

Gene Summary The protein encoded by this gene forms a complex with two other proteins, nuclear protein localization-4 and valosin-containing protein, and this complex is necessary for the degradation of ubiquitinated proteins. In addition, this complex controls the disassembly of the mitotic spindle and the formation of a closed nuclear envelope after mitosis. Mutations in this gene have been associated with Catch 22 syndrome as well as cardiac and craniofacial defects. Alternative splicing results in multiple transcript variants encoding different isoforms. A related pseudogene has been identified on chromosome 18. [provided by RefSeq]

Other Designations UB fusion protein 1|ubiquitin fusion degradation 1-like|ubiquitin fusion degradation protein 1 homolog

Disease

- [Cleft Lip](#)
- [Cleft Palate](#)

- [Genetic Predisposition to Disease](#)
- [Schizophrenia](#)