

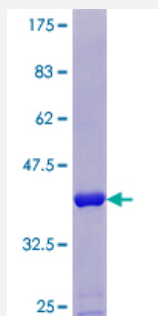
Full-Length

SUMO1 (Human) Recombinant Protein (P01)

Catalog # H00007341-P01

Size 25 ug, 10 ug

Applications



Specification

Product Description	Human SUMO1 full-length ORF (NP_001005781.1, 1 a.a. - 101 a.a.) recombinant protein with GST-tag at N-terminal.
Sequence	MSDQEAKPSTEDLGDKKEGEYIKLVIGQDSSEIHFKVKMTTHLKKLKESYCQRQGVPMNSLRFL FEGQRIADNHTPKELGMEEEDVIEVYQEQTGGHSTV
Host	Wheat Germ (in vitro)
Theoretical MW (kDa)	38
Preparation Method	in vitro wheat germ expression system
Purification	Glutathione Sepharose 4 Fast Flow
Quality Control Testing	12.5% SDS-PAGE Stained with Coomassie Blue.
Storage Buffer	50 mM Tris-HCl, 10 mM reduced Glutathione, pH=8.0 in the elution buffer.
Storage Instruction	Store at -80°C. Aliquot to avoid repeated freezing and thawing.
Note	Best use within three months from the date of receipt of this protein.

Applications

- Enzyme-linked Immunoabsorbent Assay
- Western Blot (Recombinant protein)
- Antibody Production
- Protein Array

Gene Info — SUMO1

Entrez GeneID	7341
GeneBank Accession#	NM_001005781.1
Protein Accession#	NP_001005781.1
Gene Name	SUMO1
Gene Alias	DAP-1, GMP1, OFC10, PIC1, SENP2, SMT3, SMT3C, SMT3H3, SUMO-1, UBL1
Gene Description	SMT3 suppressor of mif two 3 homolog 1 (S. cerevisiae)
Omim ID	601912
Gene Ontology	Hyperlink
Gene Summary	This gene encodes a protein that is a member of the SUMO (small ubiquitin-like modifier) protein family. It functions in a manner similar to ubiquitin in that it is bound to target proteins as part of a post-translational modification system. However, unlike ubiquitin which targets proteins for degradation, this protein is involved in a variety of cellular processes, such as nuclear transport, transcriptional regulation, apoptosis, and protein stability. It is not active until the last four amino acids of the carboxy-terminus have been cleaved off. Several pseudogenes have been reported for this gene. Alternate transcriptional splice variants encoding different isoforms have been characterized. [provided by RefSeq]
Other Designations	GAP modifying protein 1 SMT3 suppressor of mif two 3 homolog 1 sentrin ubiquitin-like 1 (sentrin)

Disease

- [Carcinoma](#)

- [Cardiovascular Diseases](#)
- [Cleft Lip](#)
- [Cleft Palate](#)
- [Diabetes Mellitus](#)
- [Edema](#)
- [Genetic Predisposition to Disease](#)
- [Lung Neoplasms](#)
- [Tooth Abnormalities](#)