

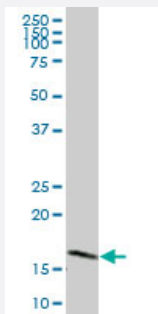
MaxPab®

UBE2V1 purified MaxPab mouse polyclonal antibody (B02P)

Catalog # H00007335-B02P

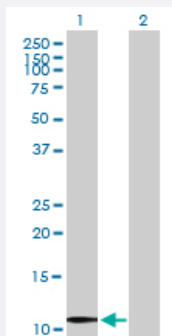
Size 50 ug

Applications



Western Blot (Tissue lysate)

UBE2V1 MaxPab polyclonal antibody. Western Blot analysis of UBE2V1 expression in human kidney.



Western Blot (Transfected lysate)

Western Blot analysis of UBE2V1 expression in transfected 293T cell line ([H00007335-T03](#)) by UBE2V1 MaxPab polyclonal antibody.

Lane 1: UBE2V1 transfected lysate(11.33 KDa).

Lane 2: Non-transfected lysate.

Specification

Product Description	Mouse polyclonal antibody raised against a full-length human UBE2V1 protein.
Immunogen	UBE2V1 (NP_071887.1, 1 a.a. ~ 103 a.a) full-length human protein.
Sequence	MKEDLNLENFTAKTYENRIYSLKIECGPKYPEAPPFVRFTKINMNGVNSSNGVVDPRASVLAKW QNSYSIKVVLQELRRLMMSKENMKLPQPPEGQCYSN
Host	Mouse
Reactivity	Human

Interspecies Antigen Sequence	Mouse (79); Rat (79)
Quality Control Testing	Antibody reactive against mammalian transfected lysate.
Storage Buffer	In 1x PBS, pH 7.4
Storage Instruction	Store at -20°C or lower. Aliquot to avoid repeated freezing and thawing.

Applications

- Western Blot (Tissue lysate)

UBE2V1 MaxPab polyclonal antibody. Western Blot analysis of UBE2V1 expression in human kidney.

[Protocol Download](#)

- Western Blot (Transfected lysate)

Western Blot analysis of UBE2V1 expression in transfected 293T cell line ([H00007335-T03](#)) by UBE2V1 MaxPab polyclonal antibody.

Lane 1: UBE2V1 transfected lysate(11.33 KDa).

Lane 2: Non-transfected lysate.

[Protocol Download](#)

Gene Info — UBE2V1

Entrez GeneID	7335
GeneBank Accession#	NM_022442.3
Protein Accession#	NP_071887.1
Gene Name	UBE2V1
Gene Alias	CIR1, CROC-1, CROC1, UBE2V, UEV-1, UEV1, UEV1A
Gene Description	ubiquitin-conjugating enzyme E2 variant 1
Omim ID	602995
Gene Ontology	Hyperlink

Gene Summary

Ubiquitin-conjugating E2 enzyme variant proteins constitute a distinct subfamily within the E2 protein family. They have sequence similarity to other ubiquitin-conjugating enzymes but lack the conserved cysteine residue that is critical for the catalytic activity of E2s. The protein encoded by this gene is located in the nucleus and can cause transcriptional activation of the human FOS proto-oncogene. It is thought to be involved in the control of differentiation by altering cell cycle behavior. Multiple alternatively spliced transcripts encoding different isoforms have been described for this gene. A pseudogene has been identified which is also located on chromosome 20. Co-transcription of this gene and the neighboring upstream gene generates a rare transcript (Kua-UEV), which encodes a fusion protein comprised of sequence sharing identity with each individual gene product. [provided by RefSeq]

Other Designations

DNA-binding protein|OTTHUMP00000031795|OTTHUMP00000031796|OTTHUMP00000039980