

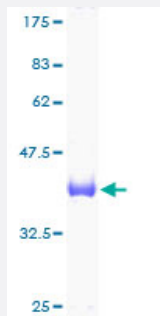
Full-Length

UBE2D3 (Human) Recombinant Protein (P01)

Catalog # H00007323-P01

Size 25 ug, 10 ug

Applications



Specification

Product Description	Human UBE2D3 full-length ORF (AAH03395, 1 a.a. - 147 a.a.) recombinant protein with GST-tag at N-terminal.
Sequence	MALKRINKELSDLARDPPAQCSAGPVGDDMFHWQATIMGPNDSPYQGGVFFLTIHFPTDYPFKP PKVAFTRRYHPNINSNGSICLDILRSQWSPALTISKVLLSICLLCDPNPDDPLVPEIARIYKTDRDKY NRISREWTQKYAM
Host	Wheat Germ (in vitro)
Theoretical MW (kDa)	41.91
Interspecies Antigen Sequence	Mouse (100); Rat (100)
Preparation Method	in vitro wheat germ expression system
Purification	Glutathione Sepharose 4 Fast Flow
Quality Control Testing	12.5% SDS-PAGE Stained with Coomassie Blue.
Storage Buffer	50 mM Tris-HCl, 10 mM reduced Glutathione, pH=8.0 in the elution buffer.
Storage Instruction	Store at -80°C. Aliquot to avoid repeated freezing and thawing.

Note

Best use within three months from the date of receipt of this protein.

Applications

- Enzyme-linked Immunoabsorbent Assay
- Western Blot (Recombinant protein)
- Antibody Production
- Protein Array

Gene Info — UBE2D3

Entrez GeneID [7323](#)

GeneBank Accession# [BC003395](#)

Protein Accession# [AAH03395](#)

Gene Name UBE2D3

Gene Alias E2(17)KB3, MGC43926, MGC5416, UBC4/5, UBCH5C

Gene Description ubiquitin-conjugating enzyme E2D 3 (UBC4/5 homolog, yeast)

Omim ID [602963](#)

Gene Ontology [Hyperlink](#)

Gene Summary The modification of proteins with ubiquitin is an important cellular mechanism for targeting abnormal or short-lived proteins for degradation. Ubiquitination involves at least three classes of enzymes: ubiquitin-activating enzymes, or E1s, ubiquitin-conjugating enzymes, or E2s, and ubiquitin-protein ligases, or E3s. This gene encodes a member of the E2 ubiquitin-conjugating enzyme family. This enzyme functions in the ubiquitination of the tumor-suppressor protein p53, which is induced by an E3 ubiquitin-protein ligase. Multiple spliced transcript variants have been found for this gene, but the full-length nature of some variants has not been determined. [provided by RefSeq]

Other Designations OTTHUMP00000161758|OTTHUMP00000161759|ubiquitin carrier protein|ubiquitin-conjugating enzyme E2-17 kDa 3|ubiquitin-conjugating enzyme E2D 3|ubiquitin-conjugating enzyme E2D 3 (homologous to yeast UBC4/5)

Pathway

- [Ubiquitin mediated proteolysis](#)

Disease

- [Alcoholism](#)
- [Genetic Predisposition to Disease](#)