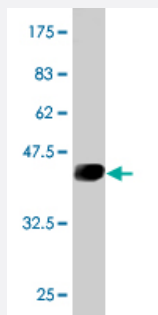


UBE2D3 monoclonal antibody (M03), clone S2

Catalog # H00007323-M03

Size 100 ug

Applications



Western Blot detection against Immunogen (41.91 KDa) .

Specification

Product Description	Mouse monoclonal antibody raised against a full-length recombinant UBE2D3.
Immunogen	UBE2D3 (AAH03395, 1 a.a. ~ 147 a.a) full-length recombinant protein with GST tag. MW of the GST tag alone is 26 KDa.
Sequence	MALKRINKELSDLARDPPAQCSAGPVGDDMFHWQATIMGPNDSPYQGGVFFLTIHFPTDYPFKP PKVAFTRRYHPNINSNGSICLDILRSQWSPALTISKVLLSICSLLCDPNPDDPLVPEIARYKTDRDKY NRISREWTQKYAM
Host	Mouse
Reactivity	Human
Interspecies Antigen Sequence	Mouse (100); Rat (100)
Isotype	IgG1 Kappa
Quality Control Testing	Antibody Reactive Against Recombinant Protein. Western Blot detection against Immunogen (41.91 KDa) .
Storage Buffer	In 1x PBS, pH 7.4
Storage Instruction	Store at -20°C or lower. Aliquot to avoid repeated freezing and thawing.

Applications

- Western Blot (Recombinant protein)

[Protocol Download](#)

- ELISA

Gene Info — UBE2D3

Entrez GeneID	7323
GeneBank Accession#	BC003395
Protein Accession#	AAH03395
Gene Name	UBE2D3
Gene Alias	E2(17)KB3, MGC43926, MGC5416, UBC4/5, UBCH5C
Gene Description	ubiquitin-conjugating enzyme E2D 3 (UBC4/5 homolog, yeast)
Omim ID	602963
Gene Ontology	Hyperlink
Gene Summary	The modification of proteins with ubiquitin is an important cellular mechanism for targeting abnormal or short-lived proteins for degradation. Ubiquitination involves at least three classes of enzymes: ubiquitin-activating enzymes, or E1s, ubiquitin-conjugating enzymes, or E2s, and ubiquitin-protein ligases, or E3s. This gene encodes a member of the E2 ubiquitin-conjugating enzyme family. This enzyme functions in the ubiquitination of the tumor-suppressor protein p53, which is induced by an E3 ubiquitin-protein ligase. Multiple spliced transcript variants have been found for this gene, but the full-length nature of some variants has not been determined. [provided by RefSeq]
Other Designations	OTTHUMP00000161758 OTTHUMP00000161759 ubiquitin carrier protein ubiquitin-conjugating enzyme E2-17 kDa 3 ubiquitin-conjugating enzyme E2D 3 ubiquitin-conjugating enzyme E2D 3 (homologous to yeast UBC4/5)

Pathway

- [Ubiquitin mediated proteolysis](#)

Disease

- [Alcoholism](#)
- [Genetic Predisposition to Disease](#)