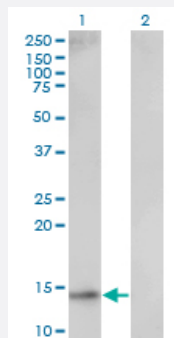


UBE2D1 monoclonal antibody (M01), clone 2C6

Catalog # H00007321-M01

Size 100 ug

Applications

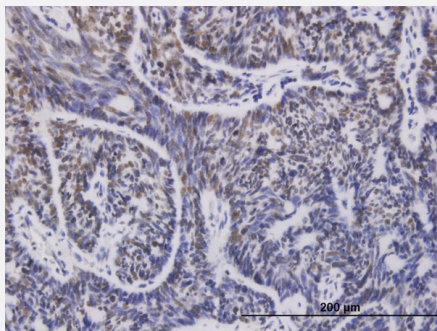


Western Blot (Transfected lysate)

Western Blot analysis of UBE2D1 expression in transfected 293T cell line by UBE2D1 monoclonal antibody (M01), clone 2C6.

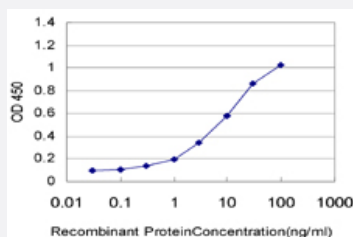
Lane 1: UBE2D1 transfected lysate (16.6 kDa).

Lane 2: Non-transfected lysate.



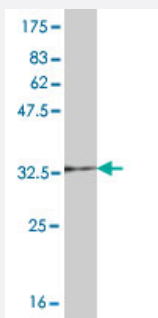
Immunohistochemistry (Formalin/PFA-fixed paraffin-embedded sections)

Immunoperoxidase of monoclonal antibody to UBE2D1 on formalin-fixed paraffin-embedded human cervix cancer. [antibody concentration 1 ug/ml]



Sandwich ELISA (Recombinant protein)

Detection limit for recombinant GST tagged UBE2D1 is approximately 0.3 ng/ml as a capture antibody.



Western Blot detection against Immunogen (36.08 KDa) .

Specification

Product Description	Mouse monoclonal antibody raised against a partial recombinant UBE2D1.
Immunogen	UBE2D1 (NP_003329, 1 a.a. ~ 94 a.a) partial recombinant protein with GST tag. MW of the GST tag alone is 26 KDa.
Sequence	MALKRIQKELSDLQRDPPAHCSAGPVGDDLFWQATIMGPPDSAYQGGVFFLTVHFPTDYPFKP PKIAFTTKIYHPNINSNGSICLDILRSQWS
Host	Mouse
Reactivity	Human
Interspecies Antigen Sequence	Mouse (100); Rat (100)
Isotype	IgG2a Kappa
Quality Control Testing	Antibody Reactive Against Recombinant Protein. Western Blot detection against Immunogen (36.08 KDa) .
Storage Buffer	In 1x PBS, pH 7.4
Storage Instruction	Store at -20°C or lower. Aliquot to avoid repeated freezing and thawing.

Applications

● Western Blot (Transfected lysate)

Western Blot analysis of UBE2D1 expression in transfected 293T cell line by UBE2D1 monoclonal antibody (M01), clone 2C6.

Lane 1: UBE2D1 transfected lysate(16.6 KDa).

Lane 2: Non-transfected lysate.

[Protocol Download](#)

- Western Blot (Recombinant protein)

[Protocol Download](#)

- Immunohistochemistry (Formalin/PFA-fixed paraffin-embedded sections)

Immunoperoxidase of monoclonal antibody to UBE2D1 on formalin-fixed paraffin-embedded human cervix cancer. [antibody concentration 1 ug/ml]

[Protocol Download](#)

- Sandwich ELISA (Recombinant protein)

Detection limit for recombinant GST tagged UBE2D1 is approximately 0.3ng/ml as a capture antibody.

[Protocol Download](#)

- ELISA

Gene Info — UBE2D1

Entrez GeneID [7321](#)

GeneBank Accession# [NM_003338](#)

Protein Accession# [NP_003329](#)

Gene Name UBE2D1

Gene Alias E2(17)KB1, SFT, UBC4/5, UBCH5, UBCH5A

Gene Description ubiquitin-conjugating enzyme E2D 1 (UBC4/5 homolog, yeast)

Omim ID [602961](#)

Gene Ontology [Hyperlink](#)

Gene Summary

The modification of proteins with ubiquitin is an important cellular mechanism for targeting abnormal or short-lived proteins for degradation. Ubiquitination involves at least three classes of enzymes: ubiquitin-activating enzymes, or E1s, ubiquitin-conjugating enzymes, or E2s, and ubiquitin-protein ligases, or E3s. This gene encodes a member of the E2 ubiquitin-conjugating enzyme family. This enzyme is closely related to a stimulator of iron transport (SFT), and is up-regulated in hereditary hemochromatosis. It also functions in the ubiquitination of the tumor-suppressor protein p53 and the hypoxia-inducible transcription factor HIF1alpha by interacting with the E1 ubiquitin-activating enzyme and the E3 ubiquitin-protein ligases. [provided by RefSeq]

Other Designations

OTTHUMP00000019631|stimulator of Fe transport|ubiquitin carrier protein|ubiquitin-conjugating enzyme E2-17 kDa 1|ubiquitin-conjugating enzyme E2D 1

Publication Reference

- [The stability of HSV-1 ICP0 early after infection is defined by the RING finger and the UL13 protein kinase.](#)

Zhu Z, Du T, Zhou G, Roizman B.

Journal of Virology 2014 May; 88(10):5437.

Application: WB-Tr, Human, HEp-2 cells

Pathway

- [Ubiquitin mediated proteolysis](#)

Disease

- [Alzheimer disease](#)
- [Genetic Predisposition to Disease](#)