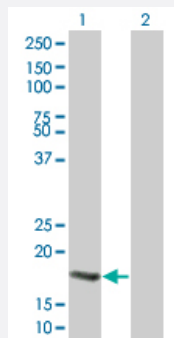


# UBE2B 293T Cell Transient Overexpression Lysate(Denatured)

Catalog # H00007320-T01

Size 100 uL

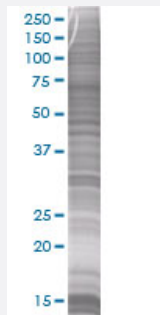
## Applications



### Western Blot

Lane 1: UBE2B transfected lysate ( 16.72 KDa)

Lane 2: Non-transfected lysate.



### SDS-PAGE Gel

UBE2B transfected lysate.

## Specification

Transfected Cell Line	293T
Plasmid	pCMV-UBE2B full-length
Host	Human
Theoretical MW (kDa)	16.83
Quality Control Testing	<p>Transient overexpression cell lysate was tested with Anti-UBE2B antibody (<a href="#">H00007320-B01</a>) by Western Blots.</p> <p>Western Blot</p> <p>Lane 1: UBE2B transfected lysate ( 16.72 KDa)</p> <p>Lane 2: Non-transfected lysate.</p> <p>SDS-PAGE Gel</p> <p>UBE2B transfected lysate.</p>

Storage Buffer	1X Sample Buffer (50 mM Tris-HCl, 2% SDS, 10% glycerol, 300 mM 2-mercaptoethanol, 0.01% Bromophenol blue)
Storage Instruction	Store at -80°C. Aliquot to avoid repeated freezing and thawing.

## Applications

- Western Blot

## Gene Info — UBE2B

Entrez GeneID	<a href="#">7320</a>
GeneBank Accession#	<a href="#">BC008470</a>
Protein Accession#	<a href="#">AAH08470</a>
Gene Name	UBE2B
Gene Alias	E2-17kDa, HHR6B, HR6B, RAD6B, UBC2
Gene Description	ubiquitin-conjugating enzyme E2B (RAD6 homolog)
Omim ID	<a href="#">179095</a>
Gene Ontology	<a href="#">Hyperlink</a>
Gene Summary	<p>The modification of proteins with ubiquitin is an important cellular mechanism for targeting abnormal or short-lived proteins for degradation. Ubiquitination involves at least three classes of enzymes: ubiquitin-activating enzymes, or E1s, ubiquitin-conjugating enzymes, or E2s, and ubiquitin-protein ligases, or E3s. This gene encodes a member of the E2 ubiquitin-conjugating enzyme family. This enzyme is required for post-replicative DNA damage repair. Its protein sequence is 100% identical to the mouse, rat, and rabbit homologs, which indicates that this enzyme is highly conserved in eukaryotic evolution. [provided by RefSeq]</p>
Other Designations	E2 protein ubiquitin carrier protein B ubiquitin-conjugating enzyme E2B ubiquitin-protein ligase B

## Pathway

- [Ubiquitin mediated proteolysis](#)

## Disease

- [Azoospermia](#)
- [Genetic Predisposition to Disease](#)
- [Infertility](#)
- [Oligospermia](#)