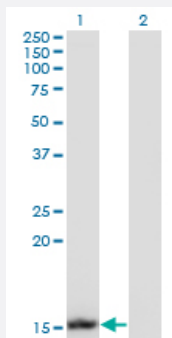


UBE2B monoclonal antibody (M13), clone 1F11

Catalog # H00007320-M13

Size 100 ug

Applications

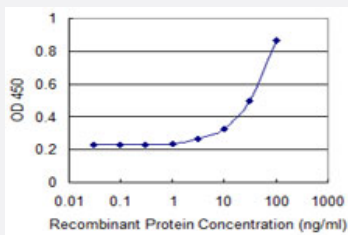


Western Blot (Transfected lysate)

Western Blot analysis of UBE2B expression in transfected 293T cell line by UBE2B monoclonal antibody (M13), clone 1F11.

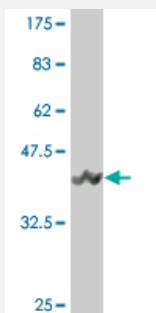
Lane 1: UBE2B transfected lysate (17.3 KDa).

Lane 2: Non-transfected lysate.



Sandwich ELISA (Recombinant protein)

Detection limit for recombinant GST tagged UBE2B is 1 ng/ml as a capture antibody.



Western Blot detection against Immunogen (42.35 KDa) .

Specification

Product Description

Mouse monoclonal antibody raised against a full-length recombinant UBE2B.

Immunogen	UBE2B (AAH08470.1, 1 a.a. ~ 152 a.a) full-length recombinant protein with GST tag. MW of the GST tag alone is 26 KDa.
Sequence	MSTPARRRLMRDFKRLQEDPPVGVSGAPSENNIMQWNAVIFGPEGTPFEDGTFKLVIEFSEEYPN KPPTVRFLSKMFHPNVYADGSICLDILQNRWSPTYDVSSILTSIQSLLDEPNPNSPANQAAQLYQ ENKREYEKRVSAVEQSWNDS
Host	Mouse
Reactivity	Human
Isotype	IgG2a Kappa
Quality Control Testing	Antibody Reactive Against Recombinant Protein. Western Blot detection against Immunogen (42.35 KDa) .
Storage Buffer	In 1x PBS, pH 7.4
Storage Instruction	Store at -20°C or lower. Aliquot to avoid repeated freezing and thawing.

Applications

- Western Blot (Transfected lysate)

Western Blot analysis of UBE2B expression in transfected 293T cell line by UBE2B monoclonal antibody (M13), clone 1F11.

Lane 1: UBE2B transfected lysate(17.3 KDa).

Lane 2: Non-transfected lysate.

[Protocol Download](#)

- Western Blot (Recombinant protein)

[Protocol Download](#)

- Sandwich ELISA (Recombinant protein)

Detection limit for recombinant GST tagged UBE2B is 1 ng/ml as a capture antibody.

[Protocol Download](#)

- ELISA

Gene Info — UBE2B

Entrez GeneID [7320](#)

GeneBank Accession#	BC008470.1
Protein Accession#	AAH08470.1
Gene Name	UBE2B
Gene Alias	E2-17kDa, HHR6B, HR6B, RAD6B, UBC2
Gene Description	ubiquitin-conjugating enzyme E2B (RAD6 homolog)
Omim ID	179095
Gene Ontology	Hyperlink
Gene Summary	<p>The modification of proteins with ubiquitin is an important cellular mechanism for targeting abnormal or short-lived proteins for degradation. Ubiquitination involves at least three classes of enzymes: ubiquitin-activating enzymes, or E1s, ubiquitin-conjugating enzymes, or E2s, and ubiquitin-protein ligases, or E3s. This gene encodes a member of the E2 ubiquitin-conjugating enzyme family. This enzyme is required for post-replicative DNA damage repair. Its protein sequence is 100% identical to the mouse, rat, and rabbit homologs, which indicates that this enzyme is highly conserved in eukaryotic evolution. [provided by RefSeq]</p>
Other Designations	E2 protein ubiquitin carrier protein B ubiquitin-conjugating enzyme E2B ubiquitin-protein ligase B

Pathway

- [Ubiquitin mediated proteolysis](#)

Disease

- [Azoospermia](#)
- [Genetic Predisposition to Disease](#)
- [Infertility](#)
- [Oligospermia](#)