

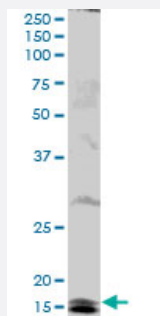
MaxPab®

UBE2B purified MaxPab mouse polyclonal antibody (B01P)

Catalog # H00007320-B01P

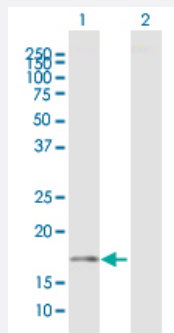
Size 50 ug

Applications



Western Blot (Cell lysate)

UBE2B MaxPab polyclonal antibody. Western Blot analysis of UBE2B expression in Jurkat.



Western Blot (Transfected lysate)

Western Blot analysis of UBE2B expression in transfected 293T cell line ([H00007320-T01](#)) by UBE2B MaxPab polyclonal antibody.

Lane 1: UBE2B transfected lysate(16.72 KDa).

Lane 2: Non-transfected lysate.

Specification

Product Description	Mouse polyclonal antibody raised against a full-length human UBE2B protein.
Immunogen	UBE2B (AAH08470.1, 1 a.a. ~ 152 a.a) full-length human protein.
Sequence	MSTPARRRLMRDFKRLQEDPPVGVSGAPSENNIMQWNAVIFGPEGTPFEDGTFKLVIEFSEEYPN KPPTVRFLSKMFHPNVYADGSLDILQNRWSPTYDVSSILTSIQSLLEPNPNPNSPANSQAAQLYQ ENKREYEKRVSAVEQSWNDS
Host	Mouse
Reactivity	Human

Quality Control Testing	Antibody reactive against mammalian transfected lysate.
Storage Buffer	In 1x PBS, pH 7.4
Storage Instruction	Store at -20°C or lower. Aliquot to avoid repeated freezing and thawing.

Applications

- Western Blot (Cell lysate)

UBE2B MaxPab polyclonal antibody. Western Blot analysis of UBE2B expression in Jurkat.

[Protocol Download](#)

- Western Blot (Transfected lysate)

Western Blot analysis of UBE2B expression in transfected 293T cell line ([H00007320-T01](#)) by UBE2B MaxPab polyclonal antibody.

Lane 1: UBE2B transfected lysate(16.72 KDa).

Lane 2: Non-transfected lysate.

[Protocol Download](#)

Gene Info — UBE2B

Entrez GeneID	7320
GeneBank Accession#	BC008470.1
Protein Accession#	AAH08470.1
Gene Name	UBE2B
Gene Alias	E2-17kDa, HHR6B, HR6B, RAD6B, UBC2
Gene Description	ubiquitin-conjugating enzyme E2B (RAD6 homolog)
Omim ID	179095
Gene Ontology	Hyperlink

Gene Summary

The modification of proteins with ubiquitin is an important cellular mechanism for targeting abnormal or short-lived proteins for degradation. Ubiquitination involves at least three classes of enzymes: ubiquitin-activating enzymes, or E1s, ubiquitin-conjugating enzymes, or E2s, and ubiquitin-protein ligases, or E3s. This gene encodes a member of the E2 ubiquitin-conjugating enzyme family. This enzyme is required for post-replicative DNA damage repair. Its protein sequence is 100% identical to the mouse, rat, and rabbit homologs, which indicates that this enzyme is highly conserved in eukaryotic evolution. [provided by RefSeq]

Other Designations

E2 protein|ubiquitin carrier protein B|ubiquitin-conjugating enzyme E2B|ubiquitin-protein ligase B

Pathway

- [Ubiquitin mediated proteolysis](#)

Disease

- [Azoospermia](#)
- [Genetic Predisposition to Disease](#)
- [Infertility](#)
- [Oligospermia](#)