

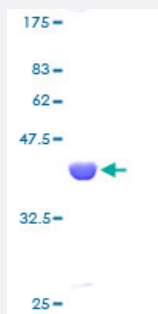
Full-Length

# UBE2A (Human) Recombinant Protein (P01)

Catalog # H00007319-P01

Size 25 ug, 10 ug

## Applications



## Specification

Product Description	Human UBE2A full-length ORF ( AAH10175, 1 a.a. - 152 a.a.) recombinant protein with GST-tag at N-terminal.
Sequence	MSTPARRRLMRDFKRLQEDPPAGVSGAPSENNIMVWNAVIFGPEGTPFEDGTFKLTIEFTEEYPN KPPTVRFVSKMFHPNVYADGSICLDILQNRWSPTYDVSSILTSIQSLLDEPNPNPANSQAAQLYQ ENKREYEKRVSAMEQSWRDC
Host	Wheat Germ (in vitro)
Theoretical MW (kDa)	42.46
Interspecies Antigen Sequence	Mouse (100); Rat (94)
Preparation Method	<a href="#">in vitro wheat germ expression system</a>
Purification	Glutathione Sepharose 4 Fast Flow
Quality Control Testing	12.5% SDS-PAGE Stained with Coomassie Blue.
Storage Buffer	50 mM Tris-HCl, 10 mM reduced Glutathione, pH=8.0 in the elution buffer.
Storage Instruction	Store at -80°C. Aliquot to avoid repeated freezing and thawing.

## Note

Best use within three months from the date of receipt of this protein.

## Applications

- Enzyme-linked Immunoabsorbent Assay
- Western Blot (Recombinant protein)
- Antibody Production
- Protein Array

## Gene Info — UBE2A

Entrez GeneID [7319](#)

GeneBank Accession# [BC010175](#)

Protein Accession# [AAH10175](#)

Gene Name UBE2A

Gene Alias HHR6A, RAD6A, UBC2

Gene Description ubiquitin-conjugating enzyme E2A (RAD6 homolog)

Omim ID [312180](#)

Gene Ontology [Hyperlink](#)

**Gene Summary** The modification of proteins with ubiquitin is an important cellular mechanism for targeting abnormal or short-lived proteins for degradation. Ubiquitination involves at least three classes of enzymes: ubiquitin-activating enzymes, or E1s, ubiquitin-conjugating enzymes, or E2s, and ubiquitin-protein ligases, or E3s. This gene encodes a member of the E2 ubiquitin-conjugating enzyme family. This enzyme is required for post-replicative DNA damage repair. Multiple alternatively spliced transcript variants have been found for this gene and they encode distinct isoforms. [provided by RefSeq]

**Other Designations** OTTHUMP00000023901|ubiquitin carrier protein A|ubiquitin-conjugating enzyme E2A|ubiquitin-protein ligase A

## Pathway

- [Ubiquitin mediated proteolysis](#)