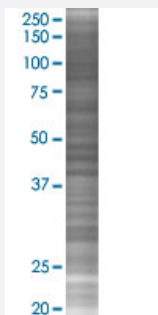


# UBE1L 293T Cell Transient Overexpression Lysate(Denatured)

Catalog # H00007318-T03

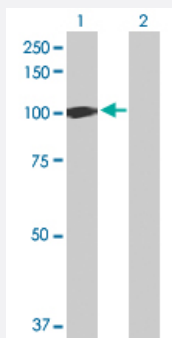
Size 100 uL

## Applications



### SDS-PAGE Gel

UBA7 transfected lysate.



### Western Blot

Lane 1: UBA7 transfected lysate ( 111.70 KDa)

Lane 2: Non-transfected lysate.

## Specification

**Transfected Cell Line** 293T

**Plasmid** pCMV-UBE1L full-length

**Host** Human

**Theoretical MW (kDa)** 111.7

**Quality Control Testing** Transient overexpression cell lysate was tested with Anti-UBE1L antibody ([H00007318-D01P](#)) by Western Blots.  
SDS-PAGE Gel  
UBA7 transfected lysate.  
Western Blot  
Lane 1: UBA7 transfected lysate ( 111.70 KDa)  
Lane 2: Non-transfected lysate.

**Storage Buffer**

1X Sample Buffer (50 mM Tris-HCl, 2% SDS, 10% glycerol, 300 mM 2-mercaptoethanol, 0.01% Bromophenol blue)

**Storage Instruction**

Store at -80°C. Aliquot to avoid repeated freezing and thawing.

## Applications

- Western Blot

## Gene Info — UBA7

**Entrez GeneID**[7318](#)**GeneBank Accession#**[NM\\_003335.2](#)**Protein Accession#**[NP\\_003326.2](#)**Gene Name**

UBA7

**Gene Alias**

D8, MGC12713, UBA1B, UBE1L, UBE2

**Gene Description**

ubiquitin-like modifier activating enzyme 7

**Omim ID**[191325](#)**Gene Ontology**[Hyperlink](#)**Gene Summary**

The modification of proteins with ubiquitin is an important cellular mechanism for targeting abnormal or short-lived proteins for degradation. Ubiquitination involves at least three classes of enzymes: ubiquitin-activating enzymes, or E1s, ubiquitin-conjugating enzymes, or E2s, and ubiquitin-protein ligases, or E3s. This gene encodes a member of the E1 ubiquitin-activating enzyme family. The encoded enzyme is a retinoid target that triggers promyelocytic leukemia (PML)/retinoic acid receptor alpha (RARalpha) degradation and apoptosis in acute promyelocytic leukemia, where it is involved in the conjugation of the ubiquitin-like interferon-stimulated gene 15 protein. [provided by RefSeq]

**Other Designations**

UBA1, ubiquitin-activating enzyme E1 homolog B|UBA7, ubiquitin-activating enzyme E1|ubiquitin-activating enzyme E1-like|ubiquitin-activating enzyme E1-related protein|ubiquitin-activating enzyme-2

## Pathway

- [Ubiquitin mediated proteolysis](#)

## Disease

- [Crohn Disease](#)
- [Genetic Predisposition to Disease](#)