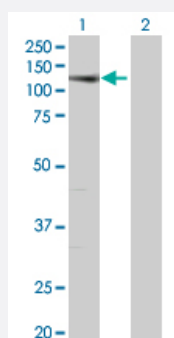


UBE1L 293T Cell Transient Overexpression Lysate(Denatured)

Catalog # H00007318-T01

Size 100 uL

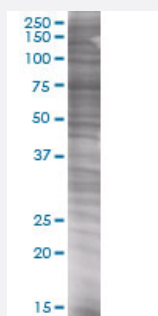
Applications



Western Blot

Lane 1: UBA7 transfected lysate (111.32 KDa)

Lane 2: Non-transfected lysate.



SDS-PAGE Gel

UBA7 transfected lysate.

Specification

Transfected Cell Line 293T

Plasmid pCMV-UBE1L full-length

Host Human

Theoretical MW (kDa) 111.43

Quality Control Testing Transient overexpression cell lysate was tested with Anti-UBE1L antibody ([H00007318-B01](#)) by Western Blots.
Western Blot
Lane 1: UBA7 transfected lysate (111.32 KDa)
Lane 2: Non-transfected lysate.
SDS-PAGE Gel
UBA7 transfected lysate.

Storage Buffer

1X Sample Buffer (50 mM Tris-HCl, 2% SDS, 10% glycerol, 300 mM 2-mercaptoethanol, 0.01% Bromophenol blue)

Storage Instruction

Store at -80°C. Aliquot to avoid repeated freezing and thawing.

Applications

- Western Blot

Gene Info — UBA7

Entrez GeneID[7318](#)**GeneBank Accession#**[BC006378](#)**Protein Accession#**[AAH06378](#)**Gene Name**

UBA7

Gene Alias

D8, MGC12713, UBA1B, UBE1L, UBE2

Gene Description

ubiquitin-like modifier activating enzyme 7

Omim ID[191325](#)**Gene Ontology**[Hyperlink](#)**Gene Summary**

The modification of proteins with ubiquitin is an important cellular mechanism for targeting abnormal or short-lived proteins for degradation. Ubiquitination involves at least three classes of enzymes: ubiquitin-activating enzymes, or E1s, ubiquitin-conjugating enzymes, or E2s, and ubiquitin-protein ligases, or E3s. This gene encodes a member of the E1 ubiquitin-activating enzyme family. The encoded enzyme is a retinoid target that triggers promyelocytic leukemia (PML)/retinoic acid receptor alpha (RARalpha) degradation and apoptosis in acute promyelocytic leukemia, where it is involved in the conjugation of the ubiquitin-like interferon-stimulated gene 15 protein. [provided by RefSeq]

Other Designations

UBA1, ubiquitin-activating enzyme E1 homolog B|UBA7, ubiquitin-activating enzyme E1|ubiquitin-activating enzyme E1-like|ubiquitin-activating enzyme E1-related protein|ubiquitin-activating enzyme-2

Pathway

- [Ubiquitin mediated proteolysis](#)

Disease

- [Crohn Disease](#)
- [Genetic Predisposition to Disease](#)