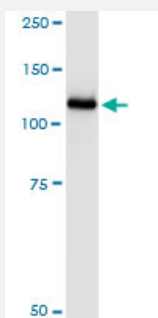


# UBA7 (Human) IP-WB Antibody Pair

Catalog # H00007318-PW1

Size 1 Set

## Applications



Immunoprecipitation of UBA7 transfected lysate using rabbit polyclonal anti-UBA7 and Protein A Magnetic Bead ([U0007](#)), and immunoblotted with mouse purified polyclonal anti-UBA7.

## Specification

|                                |   |
|--------------------------------|---|
| <b>Product Description</b>     | This IP-WB antibody pair set comes with one antibody for immunoprecipitation and another to detect the precipitated protein in western blot.  |
| <b>Reactivity</b>              | Human   |
| <b>Quality Control Testing</b> | Immunoprecipitation-Western Blot (IP-WB)<br>Immunoprecipitation of UBA7 transfected lysate using rabbit polyclonal anti-UBA7 and Protein A Magnetic Bead ( <a href="#">U0007</a> ), and immunoblotted with mouse purified polyclonal anti-UBA7. |
| <b>Supplied Product</b>        | Antibody pair set content:<br>1. Antibody pair for IP: rabbit polyclonal anti-UBA7 (300 ul)<br>2. Antibody pair for WB: mouse purified polyclonal anti-UBA7 (50 ug)   |
| <b>Storage Instruction</b>     | Store reagents of the antibody pair set at -20°C or lower. Please aliquot to avoid repeated freeze thaw cycle. Reagents should be returned to -20°C storage immediately after use.  |

## Applications

- Immunoprecipitation-Western Blot

[Protocol Download](#)

## Gene Info — UBA7

Entrez GeneID [7318](#)

Gene Name UBA7

Gene Alias D8, MGC12713, UBA1B, UBE1L, UBE2

Gene Description ubiquitin-like modifier activating enzyme 7

Omim ID [191325](#)

Gene Ontology [Hyperlink](#)

**Gene Summary**

The modification of proteins with ubiquitin is an important cellular mechanism for targeting abnormal or short-lived proteins for degradation. Ubiquitination involves at least three classes of enzymes: ubiquitin-activating enzymes, or E1s, ubiquitin-conjugating enzymes, or E2s, and ubiquitin-protein ligases, or E3s. This gene encodes a member of the E1 ubiquitin-activating enzyme family. The encoded enzyme is a retinoid target that triggers promyelocytic leukemia (PML)/retinoic acid receptor alpha (RARalpha) degradation and apoptosis in acute promyelocytic leukemia, where it is involved in the conjugation of the ubiquitin-like interferon-stimulated gene 15 protein. [provided by RefSeq]

**Other Designations**

UBA1, ubiquitin-activating enzyme E1 homolog B|UBA7, ubiquitin-activating enzyme E1|ubiquitin-activating enzyme E1-like|ubiquitin-activating enzyme E1-related protein|ubiquitin-activating enzyme-2

## Pathway

- [Ubiquitin mediated proteolysis](#)

## Disease

- [Crohn Disease](#)
- [Genetic Predisposition to Disease](#)