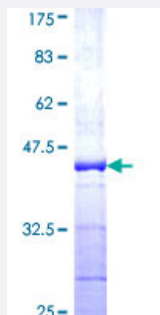


UBA52 (Human) Recombinant Protein (Q01)

Catalog # H00007311-Q01

Size 25 ug, 10 ug

Applications



Specification

Product Description	Human UBA52 partial ORF (NP_003324, 29 a.a. - 128 a.a.) recombinant protein with GST-tag at N-terminal.
Sequence	KIQDKEGIPPDQQRLIFAGKQLEDGRTLSDYNIQKESTLHLVLRLRGGIIEPSLRQLAQKYNCDKMIC RKCYARLHPRAVNCRKKKCGHTNNLRPKKKVK
Host	Wheat Germ (in vitro)
Theoretical MW (kDa)	36.74
Preparation Method	in vitro wheat germ expression system
Purification	Glutathione Sepharose 4 Fast Flow
Quality Control Testing	12.5% SDS-PAGE Stained with Coomassie Blue.
Storage Buffer	50 mM Tris-HCl, 10 mM reduced Glutathione, pH=8.0 in the elution buffer.
Storage Instruction	Store at -80°C. Aliquot to avoid repeated freezing and thawing.
Note	Best use within three months from the date of receipt of this protein.

Applications

- Enzyme-linked Immunoabsorbent Assay
- Western Blot (Recombinant protein)
- Antibody Production
- Protein Array

Gene Info — UBA52

Entrez GeneID [7311](#)

GeneBank Accession# [NM_003333](#)

Protein Accession# [NP_003324](#)

Gene Name UBA52

Gene Alias CEP52, HUBCEP52, MGC126879, MGC126881, MGC57125, RPL40

Gene Description ubiquitin A-52 residue ribosomal protein fusion product 1

Omim ID [191321](#)

Gene Ontology [Hyperlink](#)

Gene Summary Ubiquitin is a highly conserved nuclear and cytoplasmic protein that has a major role in targeting cellular proteins for degradation by the 26S proteasome. It is also involved in the maintenance of chromatin structure, the regulation of gene expression, and the stress response. Ubiquitin is synthesized as a precursor protein consisting of either polyubiquitin chains or a single ubiquitin moiety fused to an unrelated protein. This gene encodes a fusion protein consisting of ubiquitin at the N terminus and ribosomal protein L40 at the C terminus, a C-terminal extension protein (CEP). Multiple processed pseudogenes derived from this gene are present in the genome. [provided by RefSeq]

Other Designations 60S ribosomal protein L40|ribosomal protein L40|ubiquitin and ribosomal protein L40|ubiquitin carboxyl extension protein 52|ubiquitin-52 amino acid fusion protein|ubiquitin-CEP52

Pathway

- [Ribosome](#)