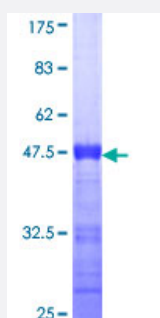


TULP2 (Human) Recombinant Protein (Q01)

Catalog # H00007288-Q01

Size 25 ug, 10 ug

Applications



Specification

Product Description	Human TULP2 partial ORF (NP_003314, 141 a.a. - 250 a.a.) recombinant protein with GST-tag at N-terminal.
Sequence	EVSVENGSVSPPPFKQSPRIRRKGWQAHQRPGTRAEGESDSQDMGDAHKSPNMGPNPGMGDG DCVYENLAFQKEEDLEKKREASESTGTNSSAAHNEELSKALKGEGGTDS
Host	Wheat Germ (in vitro)
Theoretical MW (kDa)	37.84
Interspecies Antigen Sequence	Mouse (41); Rat (34)
Preparation Method	in vitro wheat germ expression system
Purification	Glutathione Sepharose 4 Fast Flow
Quality Control Testing	12.5% SDS-PAGE Stained with Coomassie Blue.
Storage Buffer	50 mM Tris-HCl, 10 mM reduced Glutathione, pH=8.0 in the elution buffer.
Storage Instruction	Store at -80°C. Aliquot to avoid repeated freezing and thawing.
Note	Best use within three months from the date of receipt of this protein.

Applications

- Enzyme-linked Immunoabsorbent Assay
- Western Blot (Recombinant protein)
- Antibody Production
- Protein Array

Gene Info — TULP2

Entrez GeneID [7288](#)

GeneBank Accession# [NM_003323](#)

Protein Accession# [NP_003314](#)

Gene Name TULP2

Gene Alias TUBL2

Gene Description tubby like protein 2

Omim ID [602309](#)

Gene Ontology [Hyperlink](#)

Gene Summary TULP2 is a member of a family of tubby-like genes (TULPs) that encode proteins of unknown function. Members of this family have been identified in plants, vertebrates, and invertebrates. The TULP proteins share a conserved C-terminal region of approximately 200 amino acid residues. [provided by RefSeq]

Other Designations -