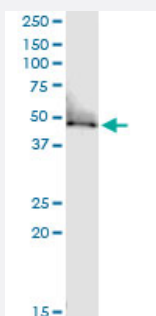


TUFM (Human) IP-WB Antibody Pair

Catalog # H00007284-PW1

Size 1 Set

Applications



Immunoprecipitation of TUFM transfected lysate using rabbit polyclonal anti-TUFM and Protein A Magnetic Bead ([U0007](#)), and immunoblotted with mouse purified polyclonal anti-TUFM.

Specification

Product Description	This IP-WB antibody pair set comes with one antibody for immunoprecipitation and another to detect the precipitated protein in western blot.
Reactivity	Human
Quality Control Testing	Immunoprecipitation-Western Blot (IP-WB) Immunoprecipitation of TUFM transfected lysate using rabbit polyclonal anti-TUFM and Protein A Magnetic Bead (U0007), and immunoblotted with mouse purified polyclonal anti-TUFM.
Supplied Product	Antibody pair set content: 1. Antibody pair for IP: rabbit polyclonal anti-TUFM (300 ul) 2. Antibody pair for WB: mouse purified polyclonal anti-TUFM (50 ug)
Storage Instruction	Store reagents of the antibody pair set at -20°C or lower. Please aliquot to avoid repeated freeze thaw cycle. Reagents should be returned to -20°C storage immediately after use.

Applications

- Immunoprecipitation-Western Blot

[Protocol Download](#)

Gene Info — TUFM

Entrez GeneID	7284
Gene Name	TUFM
Gene Alias	COXPD4, EF-TuMT, EFTU, P43
Gene Description	Tu translation elongation factor, mitochondrial
Omim ID	602389 610678
Gene Ontology	Hyperlink
Gene Summary	This gene encodes a protein which participates in protein translation in mitochondria. Mutations in this gene have been associated with combined oxidative phosphorylation deficiency resulting in lactic acidosis and fatal encephalopathy. A pseudogene has been identified on chromosome 17. [provided by RefSeq]
Other Designations	-