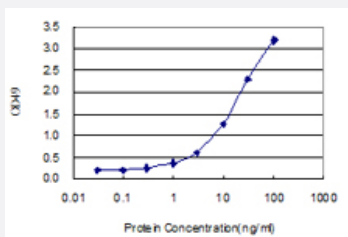


# TUFM (Human) Matched Antibody Pair

Catalog # H00007284-AP11      Size 1 Set

## Applications



Sandwich ELISA detection sensitivity ranging from 0.3 ng/ml to 100 ng/ml.

## Specification

<b>Product Description</b>	This antibody pair set comes with a matched antibody pair to detect and quantify the protein level of human TUFM.
<b>Reactivity</b>	Human
<b>Quality Control Testing</b>	Standard curve using recombinant protein ( H00007284-P01 ) as an analyte. Sandwich ELISA detection sensitivity ranging from 0.3 ng/ml to 100 ng/ml.
<b>Supplied Product</b>	Antibody pair set content: 1. Capture antibody: rabbit MaxPab® affinity purified polyclonal anti-TUFM (100 ug) 2. Detection antibody: mouse monoclonal anti-TUFM, IgG1 Kappa (20 ug) *Reagents are sufficient for at least 1-2 x 96 well plates using recommended protocols.
<b>Storage Instruction</b>	Store reagents of the antibody pair set at -20°C or lower. Please aliquot to avoid repeated freeze thaw cycle. Reagents should be returned to -20°C storage immediately after use.

## Applications

- ELISA Pair (Recombinant protein)

[Protocol Download](#)

## Gene Info — TUFM

Entrez GeneID	<a href="#">7284</a>
Gene Name	TUFM
Gene Alias	COXPD4, EF-TuMT, EFTU, P43
Gene Description	Tu translation elongation factor, mitochondrial
Omim ID	<a href="#">602389</a> <a href="#">610678</a>
Gene Ontology	<a href="#">Hyperlink</a>
Gene Summary	This gene encodes a protein which participates in protein translation in mitochondria. Mutations in this gene have been associated with combined oxidative phosphorylation deficiency resulting in lactic acidosis and fatal encephalopathy. A pseudogene has been identified on chromosome 17. [provided by RefSeq]
Other Designations	-