

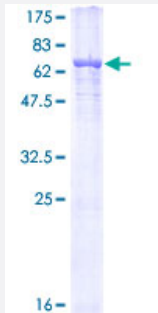
## Full-Length

# TUBA3C (Human) Recombinant Protein (P01)

Catalog # H00007278-P01

Size 25 ug, 10 ug

## Applications



## Specification

### Product Description

Human TUBA3C full-length ORF ( AAH11721.1, 1 a.a. - 418 a.a.) recombinant protein with GST-tag at N-terminal.

### Sequence

MRECISIHVGQAGVQIGNACWELCYLEHGIQPDGQMPSDKTIGGGDDSFNTFFSETGAGKHVPRA  
VFVDLEPTVVDEVRTGTyrQLFHPEQLITGKEDAANNYARGHYTIGKEMDLVLDRIKLADLCTGL  
QGFLIFHSFGGGTGSGFASLLMERLSVDYGKSKLEFAIYPAPQVSTAVVEPYNSILTHTTLEHSD  
CAFMVDNEAIDICRRNLDIERPTYTNLNLIGQVSSITASLRFDGALNVDLTFEQTNLVPYPRIHFPL  
ATYAPVISAEEKAYHEQLSVAEITNACFEPANQMVKCDPRHGKYMCCMLYRGDVVPKDVNAAIAT  
KTKRTIQFVDWCPTGFKVGINYQPPTVVPGGDLAKVQRAVCMLSNNTTAIAEAWARLDLAALKDY  
EEVGVDSEAEAEEGEEY

### Host

Wheat Germ (in vitro)

### Theoretical MW (kDa)

71.72

### Preparation Method

[in vitro wheat germ expression system](#)

### Purification

Glutathione Sepharose 4 Fast Flow

### Quality Control Testing

12.5% SDS-PAGE Stained with Coomassie Blue.

### Storage Buffer

50 mM Tris-HCl, 10 mM reduced Glutathione, pH=8.0 in the elution buffer.

### Storage Instruction

Store at -80°C. Aliquot to avoid repeated freezing and thawing.

## Note

Best use within three months from the date of receipt of this protein.

## Applications

- Enzyme-linked Immunoabsorbent Assay
- Western Blot (Recombinant protein)
- Antibody Production
- Protein Array

## Gene Info — TUBA3C

Entrez GeneID [7278](#)

GeneBank Accession# [BC011721](#)

Protein Accession# [AAH11721.1](#)

Gene Name TUBA3C

Gene Alias TUBA2, bA408E5.3

Gene Description tubulin, alpha 3c

Omim ID [602528](#)

Gene Ontology [Hyperlink](#)

**Gene Summary**

Microtubules of the eukaryotic cytoskeleton perform essential and diverse functions and are composed of a heterodimer of alpha and beta tubulin. The genes encoding these microtubule constituents are part of the tubulin superfamily, which is composed of six distinct families. Genes from the alpha, beta and gamma tubulin families are found in all eukaryotes. The alpha and beta tubulins represent the major components of microtubules, while gamma tubulin plays a critical role in the nucleation of microtubule assembly. There are multiple alpha and beta tubulin genes and they are highly conserved among and between species. This gene is an alpha tubulin gene that encodes a protein 99% identical to the mouse testis-specific Tuba3 and Tuba7 gene products. This gene is located in the 13q11 region, which is associated with the genetic diseases Clouston hidrotic ectodermal dysplasia and Kabuki syndrome. [provided by RefSeq]

**Other Designations** tubulin, alpha 2

## Pathway

- [Gap junction](#)
- [Pathogenic Escherichia coli infection - EHEC](#)