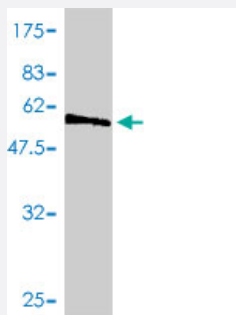


# TUBA2 polyclonal antibody (A01)

Catalog # H00007278-A01

Size 50 uL

## Applications



Western Blot detection against Immunogen (72.09 KDa) .

## Specification

Product Description	Mouse polyclonal antibody raised against a full-length recombinant TUBA2.
Immunogen	TUBA2 (AAH11721.1, 1 a.a. ~ 418 a.a) full-length recombinant protein with GST tag.
Sequence	MRECISIHVGQAGVQIGNACWELCYLEHGIQPDGQMPSDKTIGGGDDSFNTFFSETGAGKHVPRA VFVDLEPTVVDEVRTGTYRQLFHPEQLITGKEDAANNYARGHYTIGKEMDLVLDRIKLADLCTGL QGFLIFHSFGGGTGSGFASLLMERLSVDYGKSKLEFAIYPAPQVSTAVVEPYNSILTHTTLEHSD CAFMVDNEAAYDICRRNLDIERPTYTNLNLRLIGQVSSITASLRFDGALNVDLTEFQTNLVPYPRIHFPL ATYAPVISA EKAYHEQLSVAEITNACFEPANQMVKCDPRHGKYMCCMLYRGDVVPKDVNAAIATI KTKRTIQFVDWCPTGFKVGINYQPPTVVPGGDLAKVQRAVCMLSNTTAIAEAWARLDLAALKDY EEVGVDSEAEAEEGEEY
Host	Mouse
Reactivity	Human
Quality Control Testing	Antibody Reactive Against Recombinant Protein. Western Blot detection against Immunogen (72.09 KDa) .
Storage Buffer	50 % glycerol
Storage Instruction	Store at -20°C or lower. Aliquot to avoid repeated freezing and thawing.

## Applications

- Western Blot (Recombinant protein)

[Protocol Download](#)

- ELISA

## Gene Info — TUBA3C

Entrez GeneID [7278](#)

GeneBank Accession# [BC011721](#)

Protein Accession# [AAH11721.1](#)

Gene Name TUBA3C

Gene Alias TUBA2, bA408E5.3

Gene Description tubulin, alpha 3c

Omim ID [602528](#)

Gene Ontology [Hyperlink](#)

**Gene Summary**

Microtubules of the eukaryotic cytoskeleton perform essential and diverse functions and are composed of a heterodimer of alpha and beta tubulin. The genes encoding these microtubule constituents are part of the tubulin superfamily, which is composed of six distinct families. Genes from the alpha, beta and gamma tubulin families are found in all eukaryotes. The alpha and beta tubulins represent the major components of microtubules, while gamma tubulin plays a critical role in the nucleation of microtubule assembly. There are multiple alpha and beta tubulin genes and they are highly conserved among and between species. This gene is an alpha tubulin gene that encodes a protein 99% identical to the mouse testis-specific Tuba3 and Tuba7 gene products. This gene is located in the 13q11 region, which is associated with the genetic diseases Clouston hidrotic ectodermal dysplasia and Kabuki syndrome. [provided by RefSeq]

**Other Designations** tubulin, alpha 2

## Pathway

- [Gap junction](#)
- [Pathogenic Escherichia coli infection - EHEC](#)