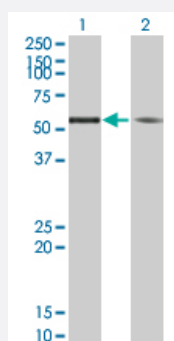


# TUBA1 monoclonal antibody (M05), clone 1G2

Catalog # H00007277-M05

Size 100 ug

## Applications

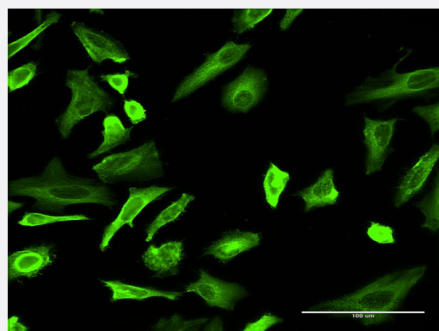


### Western Blot (Transfected lysate)

Western Blot analysis of TUBA1 expression in transfected 293T cell line by TUBA1 monoclonal antibody (M05), clone 1G2.

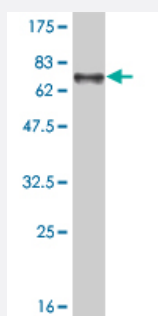
Lane 1: TUBA1 transfected lysate(49.9 KDa).

Lane 2: Non-transfected lysate.



### Immunofluorescence

Immunofluorescence of monoclonal antibody to TUBA4A on HeLa cell .  
[antibody concentration 10 ug/ml]



Western Blot detection against Immunogen (75.02 KDa) .

## Specification

### Product Description

Mouse monoclonal antibody raised against a full length recombinant TUBA1.

Immunogen	TUBA1 (AAH09238, 1 a.a. ~ 448 a.a) full-length recombinant protein with GST tag. MW of the GST tag alone is 26 KDa.
Sequence	MRECISVHVGGAGVQMGNACWELCYLEHGIQPDGQMPSDKTIGGGDDSFSTFFCETGAGKHVP RAVFVDLEPTVIDEIRNGPYRQLFHPEQLITGKEDAANNYARGHYTIGKEIIDPVLDRIRKLSDQCTGL QGFLVFHSGGGTSGGFTSLLMERLSVDYGKSKLEFSIYPAPQVSTAVVEPYNSILTHTTLEHS DCAFMVDNEAIDICRRNLDIERPTYTNLNLISQIVSSITASLRFDGALNVDLTFQTNLVPYPRIHF PLATYAPVISAEKAYHEQLSVAEITNACFEPANQMVKCDPRHGKYMACECLLYRGDVVPKDVNAAI AAIKTKRSIQFVDWCPTGFKVGINYQPPTVVPGGDLAKVQRAVCMLSNTTAAIEAWARLDHKFDL MYAKRAVFHWYVGEEMEEGEFSEAREDMAALEKDYEEVGIDSYEDEDEGEE
Host	Mouse
Reactivity	Human
Isotype	IgG1 Kappa
Quality Control Testing	Antibody Reactive Against Recombinant Protein. Western Blot detection against Immunogen (75.02 KDa) .
Storage Buffer	In 1x PBS, pH 7.4
Storage Instruction	Store at -20°C or lower. Aliquot to avoid repeated freezing and thawing.

## Applications

- Western Blot (Transfected lysate)

Western Blot analysis of TUBA1 expression in transfected 293T cell line by TUBA1 monoclonal antibody (M05), clone 1G2.

Lane 1: TUBA1 transfected lysate(49.9 KDa).

Lane 2: Non-transfected lysate.

[Protocol Download](#)

- Western Blot (Recombinant protein)

[Protocol Download](#)

- ELISA

- Immunofluorescence

Immunofluorescence of monoclonal antibody to TUBA4A on HeLa cell . [antibody concentration 10 ug/ml]

## Gene Info — TUBA4A

Entrez GeneID	<a href="#">7277</a>
GeneBank Accession#	<a href="#">BC009238</a>
Protein Accession#	<a href="#">AAH09238</a>
Gene Name	TUBA4A
Gene Alias	FLJ30169, H2-ALPHA, TUBA1
Gene Description	tubulin, alpha 4a
Omim ID	<a href="#">191110</a>
Gene Ontology	<a href="#">Hyperlink</a>
Gene Summary	Microtubules of the eukaryotic cytoskeleton perform essential and diverse functions and are composed of a heterodimer of alpha and beta tubulin. The genes encoding these microtubule constituents are part of the tubulin superfamily, which is composed of six distinct families. Genes from the alpha, beta and gamma tubulin families are found in all eukaryotes. The alpha and beta tubulins represent the major components of microtubules, while gamma tubulin plays a critical role in the nucleation of microtubule assembly. There are multiple alpha and beta tubulin genes and they are highly conserved among and between species. This gene encodes an alpha tubulin that is a highly conserved homolog of a rat testis-specific alpha tubulin. [provided by RefSeq]
Other Designations	tubulin alpha-1 chain tubulin, alpha 1 (testis specific)

## Pathway

- [Gap junction](#)
- [Pathogenic Escherichia coli infection - EHEC](#)

## Disease

- [Diabetes Mellitus](#)