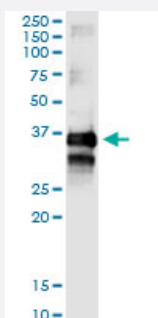


TTC1 (Human) IP-WB Antibody Pair

Catalog # H00007265-PW2

Size 1 Set

Applications



Immunoprecipitation of TTC1 transfected lysate using rabbit polyclonal anti-TTC1 and Protein A Magnetic Bead ([U0007](#)), and immunoblotted with mouse purified polyclonal anti-TTC1.

Specification

| | |
|--------------------------------|---|
| Product Description | This IP-WB antibody pair set comes with one antibody for immunoprecipitation and another to detect the precipitated protein in western blot. |
| Reactivity | Human |
| Quality Control Testing | Immunoprecipitation-Western Blot (IP-WB) Immunoprecipitation of TTC1 transfected lysate using rabbit polyclonal anti-TTC1 and Protein A Magnetic Bead (U0007), and immunoblotted with mouse purified polyclonal anti-TTC1. |
| Supplied Product | Antibody pair set content: 1. Antibody pair for IP: rabbit polyclonal anti-TTC1 (300 ul) 2. Antibody pair for WB: mouse purified polyclonal anti-TTC1 (50 ug) |
| Storage Instruction | Store reagents of the antibody pair set at -20°C or lower. Please aliquot to avoid repeated freeze thaw cycle. Reagents should be returned to -20°C storage immediately after use. |

Applications

- Immunoprecipitation-Western Blot

[Protocol Download](#)

Gene Info — TTC1

| | |
|--------------------|-----------------------------------|
| Entrez GeneID | 7265 |
| Gene Name | TTC1 |
| Gene Alias | FLJ46404, TPR1 |
| Gene Description | tetratricopeptide repeat domain 1 |
| Omim ID | 601963 |
| Gene Ontology | Hyperlink |
| Other Designations | - |