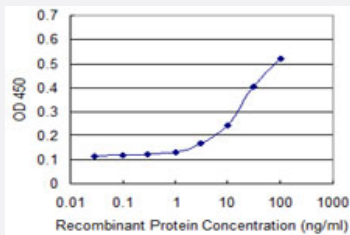


# PHLDA2 monoclonal antibody (M01), clone 5E3

Catalog # H00007262-M01

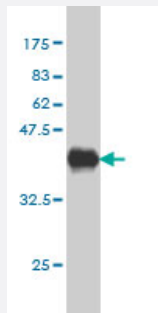
Size 100 ug

## Applications



### Sandwich ELISA (Recombinant protein)

Detection limit for recombinant GST tagged PHLDA2 is approximately 0.3ng/ml as a capture antibody.



Western Blot detection against Immunogen (37.84 KDa) .

## Specification

### Product Description

Mouse monoclonal antibody raised against a partial recombinant PHLDA2.

### Immunogen

PHLDA2 (NP\_003302, 1 a.a. ~ 110 a.a) partial recombinant protein with GST tag. MW of the GST tag alone is 26 KDa.

### Sequence

MKSPDEVLRERGELEKRSLSLFLWKKKRGVLTSDRLSLFPASPRARPKELRFHSILKVDCVERT  
GKYVYFTIVTTDHKEIDFRCAGESCWNAAIALALIDFQNRRLQDF

### Host

Mouse

### Reactivity

Human

Interspecies Antigen Sequence	Mouse (77); Rat (75)
Isotype	IgG2a Kappa
Quality Control Testing	Antibody Reactive Against Recombinant Protein. Western Blot detection against Immunogen (37.84 KDa) .
Storage Buffer	In 1x PBS, pH 7.4
Storage Instruction	Store at -20°C or lower. Aliquot to avoid repeated freezing and thawing.

## Applications

- Western Blot (Recombinant protein)

[Protocol Download](#)

- Sandwich ELISA (Recombinant protein)

Detection limit for recombinant GST tagged PHLDA2 is approximately 0.3ng/ml as a capture antibody.

[Protocol Download](#)

- ELISA

## Gene Info — PHLDA2

Entrez GeneID	<a href="#">7262</a>
GeneBank Accession#	<a href="#">NM_003311</a>
Protein Accession#	<a href="#">NP_003302</a>
Gene Name	PHLDA2
Gene Alias	BRW1C, BWR1C, HLDA2, IPL, TSSC3
Gene Description	pleckstrin homology-like domain, family A, member 2
Omim ID	<a href="#">602131</a>
Gene Ontology	<a href="#">Hyperlink</a>

**Gene Summary**

This gene is one of several genes in the imprinted gene domain of 11p15.5 which is considered to be an important tumor suppressor gene region. Alterations in this region may be associated with the Beckwith-Wiedemann syndrome, Wilms tumor, rhabdomyosarcoma, adrenocortical carcinoma, and lung, ovarian, and breast cancer. Studies of the mouse gene, however, which is also located in an imprinted gene domain, have shown that the product of this gene regulates placental growth. [provided by RefSeq]

**Other Designations**

imprinted in placenta and liver|p17-Beckwith-Wiedemann region 1C|pleckstrin homology-like domain family A member 2|tumor suppressing subchromosomal transferable fragment cDNA 3|tumor suppressing subtransferable candidate 3|tumor-suppressing STF cDNA 3

**Publication Reference**

- [Characterisation of marsupial PHLDA2 reveals eutherian specific acquisition of imprinting.](#)

Suzuki S, Shaw G, Kaneko-Ishino T, Ishino F, Renfree MB.

BMC Evol Biol 2011 Aug; 11:244.

Application: IHC, Tammar, Tammar yolk sac placenta