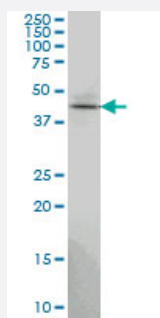


# TSSC1 monoclonal antibody (M01), clone 2H5

Catalog # H00007260-M01

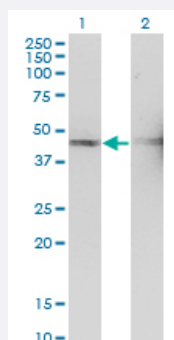
Size 100 ug

## Applications



### Western Blot (Cell lysate)

TSSC1 monoclonal antibody (M01), clone 2H5 Western Blot analysis of TSSC1 expression in PC-12 ( Cat # L012V1 ).

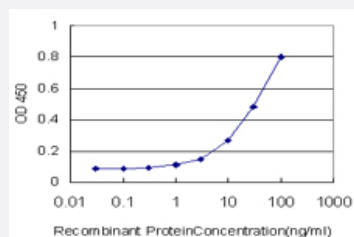


### Western Blot (Transfected lysate)

Western Blot analysis of TSSC1 expression in transfected 293T cell line by TSSC1 monoclonal antibody (M01), clone 2H5.

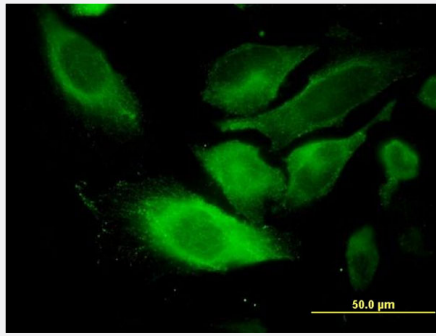
Lane 1: TSSC1 transfected lysate (Predicted MW: 43.6 KDa).

Lane 2: Non-transfected lysate.



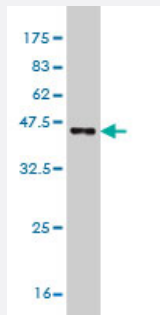
### Sandwich ELISA (Recombinant protein)

Detection limit for recombinant GST tagged TSSC1 is approximately 1ng/ml as a capture antibody.



## Immunofluorescence

Immunofluorescence of monoclonal antibody to TSSC1 on HeLa cell. [antibody concentration 10 ug/ml]



Western Blot detection against Immunogen (36.74 KDa) .

## Specification

<b>Product Description</b>	Mouse monoclonal antibody raised against a partial recombinant TSSC1.
<b>Immunogen</b>	TSSC1 (NP_003301, 288 a.a. ~ 387 a.a) partial recombinant protein with GST tag. MW of the GST tag alone is 26 KDa.
<b>Sequence</b>	VLTGSSDSRVILSNMVSISSEPFGHLVDDDDISDQEDHRSEEKSKEPLQDNVIATYEEHEDSVYAV DWSSADPWLFASLSYDGRLVINRVPRALKYHILL
<b>Host</b>	Mouse
<b>Reactivity</b>	Human, Rat
<b>Isotype</b>	IgG2a Kappa
<b>Quality Control Testing</b>	Antibody Reactive Against Recombinant Protein. Western Blot detection against Immunogen (36.74 KDa) .
<b>Storage Buffer</b>	In 1x PBS, pH 7.4
<b>Storage Instruction</b>	Store at -20°C or lower. Aliquot to avoid repeated freezing and thawing.

## Applications

- Western Blot (Cell lysate)

TSSC1 monoclonal antibody (M01), clone 2H5 Western Blot analysis of TSSC1 expression in PC-12 ( Cat # L012V1 ).

[Protocol Download](#)

- Western Blot (Transfected lysate)

Western Blot analysis of TSSC1 expression in transfected 293T cell line by TSSC1 monoclonal antibody (M01), clone 2H5.

Lane 1: TSSC1 transfected lysate (Predicted MW: 43.6 KDa).

Lane 2: Non-transfected lysate.

[Protocol Download](#)

- Western Blot (Recombinant protein)

[Protocol Download](#)

- Sandwich ELISA (Recombinant protein)

Detection limit for recombinant GST tagged TSSC1 is approximately 1ng/ml as a capture antibody.

[Protocol Download](#)

- ELISA

- Immunofluorescence

Immunofluorescence of monoclonal antibody to TSSC1 on HeLa cell. [antibody concentration 10 ug/ml]

## Gene Info — TSSC1

Entrez GeneID [7260](#)

GeneBank Accession# [NM\\_003310](#)

Protein Accession# [NP\\_003301](#)

Gene Name TSSC1

Gene Alias -

Gene Description tumor suppressing subtransferable candidate 1

Omim ID [608998](#)

Gene Ontology [Hyperlink](#)

**Gene Summary**

This gene has been reported in PMID 9403053 as one of several tumor-suppressing subtransferable fragments located in the imprinted gene domain of 11p15.5, an important tumor-suppressor gene region. Alterations in this region have been associated with the Beckwith-Wiedemann syndrome, Wilms tumor, rhabdomyosarcoma, adrenocortical carcinoma, and lung, ovarian, and breast cancer. Alignment of this gene to genomic sequence data suggests that this gene resides on chromosome 2 rather than chromosome 11. [provided by RefSeq]

**Other Designations**

tumor-suppressing STF cDNA 1