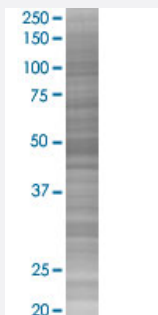


# TRIP6 293T Cell Transient Overexpression Lysate(Denatured)

Catalog # H00007205-T02

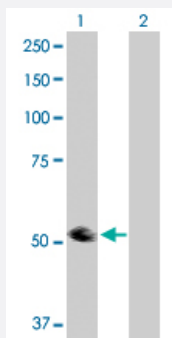
Size 100 uL

## Applications



### SDS-PAGE Gel

TRIP6 transfected lysate.



### Western Blot

Lane 1: TRIP6 transfected lysate ( 50.30 KDa)

Lane 2: Non-transfected lysate.

## Specification

**Transfected Cell Line** 293T

**Plasmid** pCMV-TRIP6 full-length

**Host** Human

**Theoretical MW (kDa)** 50.3

### Quality Control Testing

Transient overexpression cell lysate was tested with Anti-TRIP6 antibody ([H00007205-D01P](#)) by Western Blots.

SDS-PAGE Gel

TRIP6 transfected lysate.

Western Blot

Lane 1: TRIP6 transfected lysate ( 50.30 KDa)

Lane 2: Non-transfected lysate.

**Storage Buffer**

1X Sample Buffer (50 mM Tris-HCl, 2% SDS, 10% glycerol, 300 mM 2-mercaptoethanol, 0.01% Bromophenol blue)

**Storage Instruction**

Store at -80°C. Aliquot to avoid repeated freezing and thawing.

## Applications

- Western Blot

## Gene Info — TRIP6

**Entrez GeneID**[7205](#)**GeneBank Accession#**[NM\\_003302.2](#)**Protein Accession#**[NP\\_003293.2](#)**Gene Name**

TRIP6

**Gene Alias**

MGC10556, MGC10558, MGC29959, MGC3837, MGC4423, OIP1, ZRP-1

**Gene Description**

thyroid hormone receptor interactor 6

**Omim ID**[602933](#)**Gene Ontology**[Hyperlink](#)**Gene Summary**

This gene is a member of the zyxin family and encodes a protein with three LIM zinc-binding domains. This protein localizes to focal adhesion sites and along actin stress fibers. Recruitment of this protein to the plasma membrane occurs in a lysophosphatidic acid (LPA)-dependent manner and it regulates LPA-induced cell migration. Alternatively spliced variants which encode different protein isoforms have been described; however, not all variants have been fully characterized. [provided by RefSeq]

**Other Designations**

OPA-interacting protein 1|thyroid receptor-interacting protein 6|zyxin related protein 1