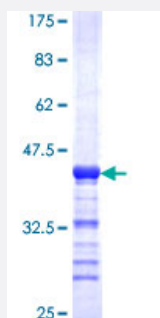


TRIP6 (Human) Recombinant Protein (Q02)

Catalog # H00007205-Q02

Size 25 ug, 10 ug

Applications



Specification

Product Description	Human TRIP6 partial ORF (NP_003293, 51 a.a. - 148 a.a.) recombinant protein with GST-tag at N-terminal.
Sequence	SEQCYQAPGGPEDRGPAWVGSHGVLQHTQGLPADRGGLRPGSLDAEIDLLSSTLAELNGGRGH ASRRPDRQAYEPPPPPAYRTGSLKPNPASPLPASP
Host	Wheat Germ (in vitro)
Theoretical MW (kDa)	36.52
Preparation Method	in vitro wheat germ expression system
Purification	Glutathione Sepharose 4 Fast Flow
Quality Control Testing	12.5% SDS-PAGE Stained with Coomassie Blue.
Storage Buffer	50 mM Tris-HCl, 10 mM reduced Glutathione, pH=8.0 in the elution buffer.
Storage Instruction	Store at -80°C. Aliquot to avoid repeated freezing and thawing.
Note	Best use within three months from the date of receipt of this protein.

Applications

- Enzyme-linked Immunoabsorbent Assay
- Western Blot (Recombinant protein)
- Antibody Production
- Protein Array

Gene Info — TRIP6

Entrez GeneID [7205](#)

GeneBank Accession# [NM_003302](#)

Protein Accession# [NP_003293](#)

Gene Name TRIP6

Gene Alias MGC10556, MGC10558, MGC29959, MGC3837, MGC4423, OIP1, ZRP-1

Gene Description thyroid hormone receptor interactor 6

Omim ID [602933](#)

Gene Ontology [Hyperlink](#)

Gene Summary This gene is a member of the zyxin family and encodes a protein with three LIM zinc-binding domains. This protein localizes to focal adhesion sites and along actin stress fibers. Recruitment of this protein to the plasma membrane occurs in a lysophosphatidic acid (LPA)-dependent manner and it regulates LPA-induced cell migration. Alternatively spliced variants which encode different protein isoforms have been described; however, not all variants have been fully characterized. [provided by RefSeq]

Other Designations OPA-interacting protein 1|thyroid receptor-interacting protein 6|zyxin related protein 1