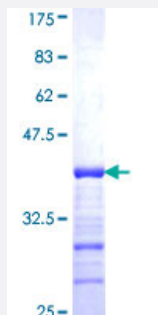


# TRIP6 (Human) Recombinant Protein (Q01)

Catalog # H00007205-Q01

Size 25 ug, 10 ug

## Applications



## Specification

<b>Product Description</b>	Human TRIP6 partial ORF ( NP_003293, 1 a.a. - 100 a.a.) recombinant protein with GST-tag at N-terminal.
<b>Sequence</b>	MSGPTWLPPKQPEPARAPQGRAIPRGTPGPPPAHGAALQPHPRVNFCPLPSEQCYQAPGGPE DRGPAWVGSHGVLQHTQGLPADRGGLRPGSLDAEIDLL
<b>Host</b>	Wheat Germ (in vitro)
<b>Theoretical MW (kDa)</b>	36.74
<b>Preparation Method</b>	<a href="#">in vitro wheat germ expression system</a>
<b>Purification</b>	Glutathione Sepharose 4 Fast Flow
<b>Quality Control Testing</b>	12.5% SDS-PAGE Stained with Coomassie Blue.
<b>Storage Buffer</b>	50 mM Tris-HCl, 10 mM reduced Glutathione, pH=8.0 in the elution buffer.
<b>Storage Instruction</b>	Store at -80°C. Aliquot to avoid repeated freezing and thawing.
<b>Note</b>	Best use within three months from the date of receipt of this protein.

## Applications

- Enzyme-linked Immunoabsorbent Assay
- Western Blot (Recombinant protein)
- Antibody Production
- Protein Array

## Gene Info — TRIP6

**Entrez GeneID** [7205](#)

**GeneBank Accession#** [NM\\_003302](#)

**Protein Accession#** [NP\\_003293](#)

**Gene Name** TRIP6

**Gene Alias** MGC10556, MGC10558, MGC29959, MGC3837, MGC4423, OIP1, ZRP-1

**Gene Description** thyroid hormone receptor interactor 6

**Omim ID** [602933](#)

**Gene Ontology** [Hyperlink](#)

**Gene Summary** This gene is a member of the zyxin family and encodes a protein with three LIM zinc-binding domains. This protein localizes to focal adhesion sites and along actin stress fibers. Recruitment of this protein to the plasma membrane occurs in a lysophosphatidic acid (LPA)-dependent manner and it regulates LPA-induced cell migration. Alternatively spliced variants which encode different protein isoforms have been described; however, not all variants have been fully characterized. [provided by RefSeq]

**Other Designations** OPA-interacting protein 1|thyroid receptor-interacting protein 6|zyxin related protein 1