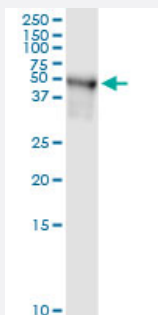


TRIP6 (Human) IP-WB Antibody Pair

Catalog # H00007205-PW2

Size 1 Set

Applications



Immunoprecipitation of TRIP6 transfected lysate using rabbit polyclonal anti-TRIP6 and Protein A Magnetic Bead ([U0007](#)), and immunoblotted with mouse purified polyclonal anti-TRIP6.

Specification

Product Description	This IP-WB antibody pair set comes with one antibody for immunoprecipitation and another to detect the precipitated protein in western blot.
Reactivity	Human
Quality Control Testing	Immunoprecipitation-Western Blot (IP-WB) Immunoprecipitation of TRIP6 transfected lysate using rabbit polyclonal anti-TRIP6 and Protein A Magnetic Bead (U0007), and immunoblotted with mouse purified polyclonal anti-TRIP6.
Supplied Product	Antibody pair set content: 1. Antibody pair for IP: rabbit polyclonal anti-TRIP6 (300 ul) 2. Antibody pair for WB: mouse purified polyclonal anti-TRIP6 (50 ug)
Storage Instruction	Store reagents of the antibody pair set at -20°C or lower. Please aliquot to avoid repeated freeze thaw cycle. Reagents should be returned to -20°C storage immediately after use.

Applications

- Immunoprecipitation-Western Blot

[Protocol Download](#)

Gene Info — TRIP6

Entrez GeneID [7205](#)**Gene Name** TRIP6**Gene Alias** MGC10556, MGC10558, MGC29959, MGC3837, MGC4423, OIP1, ZRP-1**Gene Description** thyroid hormone receptor interactor 6**Omim ID** [602933](#)**Gene Ontology** [Hyperlink](#)

Gene Summary This gene is a member of the zyxin family and encodes a protein with three LIM zinc-binding domains. This protein localizes to focal adhesion sites and along actin stress fibers. Recruitment of this protein to the plasma membrane occurs in a lysophosphatidic acid (LPA)-dependent manner and it regulates LPA-induced cell migration. Alternatively spliced variants which encode different protein isoforms have been described; however, not all variants have been fully characterized. [provided by RefSeq]

Other Designations OPA-interacting protein 1|thyroid receptor-interacting protein 6|zyxin related protein 1