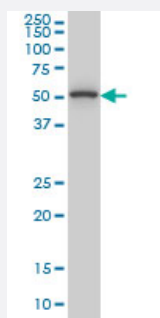


TRIP6 monoclonal antibody (M04), clone 4B7

Catalog # H00007205-M04

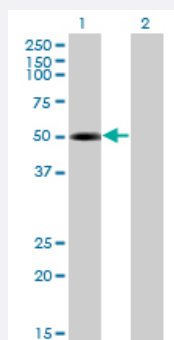
Size 100 ug

Applications



Western Blot (Cell lysate)

TRIP6 monoclonal antibody (M04), clone 4B7 Western Blot analysis of TRIP6 expression in HeLa S3 NE (Cat # L013V3).

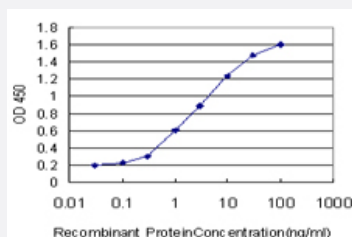


Western Blot (Transfected lysate)

Western Blot analysis of TRIP6 expression in transfected 293T cell line by TRIP6 monoclonal antibody (M04), clone 4B7.

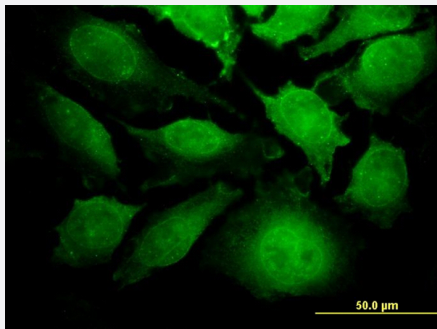
Lane 1: TRIP6 transfected lysate(50.3 KDa).

Lane 2: Non-transfected lysate.



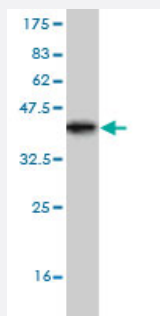
Sandwich ELISA (Recombinant protein)

Detection limit for recombinant GST tagged TRIP6 is approximately 0.1ng/ml as a capture antibody.



Immunofluorescence

Immunofluorescence of monoclonal antibody to TRIP6 on HeLa cell. [antibody concentration 35 ug/ml]



Western Blot detection against Immunogen (36.52 KDa) .

Specification

Product Description	Mouse monoclonal antibody raised against a partial recombinant TRIP6.
Immunogen	TRIP6 (NP_003293, 51 a.a. ~ 148 a.a) partial recombinant protein with GST tag. MW of the GST tag alone is 26 KDa.
Sequence	SEQCYQAPGGPEDRGPAWVGSHGVLQHTQGLPADRGGLRPGSLDAEIDLLSSTLAELNGGRGH ASRRPDRQAYEPPPPPAYRTGSLKPNPASPLPASP
Host	Mouse
Reactivity	Human
Isotype	IgG3 Kappa
Quality Control Testing	Antibody Reactive Against Recombinant Protein. Western Blot detection against Immunogen (36.52 KDa) .
Storage Buffer	In 1x PBS, pH 7.4
Storage Instruction	Store at -20°C or lower. Aliquot to avoid repeated freezing and thawing.

Applications

- Western Blot (Cell lysate)

TRIP6 monoclonal antibody (M04), clone 4B7 Western Blot analysis of TRIP6 expression in Hela S3 NE (Cat # L013V3).

[Protocol Download](#)

- Western Blot (Transfected lysate)

Western Blot analysis of TRIP6 expression in transfected 293T cell line by TRIP6 monoclonal antibody (M04), clone 4B7.

Lane 1: TRIP6 transfected lysate(50.3 KDa).

Lane 2: Non-transfected lysate.

[Protocol Download](#)

- Western Blot (Recombinant protein)

[Protocol Download](#)

- Sandwich ELISA (Recombinant protein)

Detection limit for recombinant GST tagged TRIP6 is approximately 0.1ng/ml as a capture antibody.

[Protocol Download](#)

- ELISA

- Immunofluorescence

Immunofluorescence of monoclonal antibody to TRIP6 on HeLa cell. [antibody concentration 35 ug/ml]

Gene Info — TRIP6

Entrez GeneID [7205](#)

GeneBank Accession# [NM_003302](#)

Protein Accession# [NP_003293](#)

Gene Name TRIP6

Gene Alias MGC10556, MGC10558, MGC29959, MGC3837, MGC4423, OIP1, ZRP-1

Gene Description thyroid hormone receptor interactor 6

Omim ID [602933](#)

Gene Ontology [Hyperlink](#)

Gene Summary

This gene is a member of the zyxin family and encodes a protein with three LIM zinc-binding domains. This protein localizes to focal adhesion sites and along actin stress fibers. Recruitment of this protein to the plasma membrane occurs in a lysophosphatidic acid (LPA)-dependent manner and it regulates LPA-induced cell migration. Alternatively spliced variants which encode different protein isoforms have been described; however, not all variants have been fully characterized. [provided by RefSeq]

Other Designations

OPA-interacting protein 1|thyroid receptor-interacting protein 6|zyxin related protein 1