

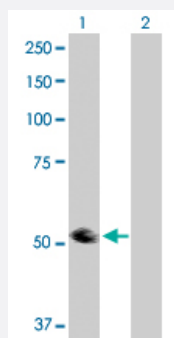
MaxPab®

TRIP6 purified MaxPab rabbit polyclonal antibody (D01P)

Catalog # H00007205-D01P

Size 100 ug

Applications



Western Blot (Transfected lysate)

Western Blot analysis of TRIP6 expression in transfected 293T cell line ([H00007205-T02](#)) by TRIP6 MaxPab polyclonal antibody.

Lane 1: TRIP6 transfected lysate(50.30 KDa).

Lane 2: Non-transfected lysate.

Specification

Product Description

Rabbit polyclonal antibody raised against a full-length human TRIP6 protein.

Immunogen

TRIP6 (NP_003293.2, 1 a.a. ~ 476 a.a) full-length human protein.

Sequence

MSGPTWLPPKQPEPARAPQGRAIPRGTPGPPPAHGAALQPHPRVNFCLPSEQCYQAPGGPE
DRGPAWVGSHGVLQHTQGLPADRGGLRPGSLDAEIDLLSSTLAELNGGRGHASRRPDRQAYEP
PPPPAYRTGSLKPNPASPLPASPYGGPTPASYYTASTPAGPAFPVQVKVAQPVRGCGPPRRGA
SQASGPLPGPHFPLPGRGEVWGPGYRSQREPGPGAKEEAAGVSGPAGRGRGGEHGPQVPLS
QPPPELDRLTKKLVDHDMNHPPSGEYFGQCGGCGEDVVGAGVVALDRVFHVGCFCVSTCR
AQLRGQHFYAVERRAYCEGCYVATLEKCATCSQPILDRILRAMGKAYHPGCFTCVVCHRGLDGIP
FTVDATSIHCIEDFHRKFAPRCVCGGAIMPEPGQEETVRIVALDRSFHIGCYKCEECGLLLSSE
GECQGCYPLDGHILCKACSAWRIQELSATVTTDC

Host

Rabbit

Reactivity

Human

Quality Control Testing

Antibody reactive against mammalian transfected lysate.

Storage Buffer

In 1x PBS, pH 7.4

Storage Instruction

Store at -20°C or lower. Aliquot to avoid repeated freezing and thawing.

Applications

- Western Blot (Transfected lysate)

Western Blot analysis of TRIP6 expression in transfected 293T cell line ([H00007205-T02](#)) by TRIP6 MaxPab polyclonal antibody.

Lane 1: TRIP6 transfected lysate(50.30 KDa).

Lane 2: Non-transfected lysate.

[Protocol Download](#)

Gene Info — TRIP6

Entrez GeneID [7205](#)

GeneBank Accession# [NM_003302.2](#)

Protein Accession# [NP_003293.2](#)

Gene Name TRIP6

Gene Alias MGC10556, MGC10558, MGC29959, MGC3837, MGC4423, OIP1, ZRP-1

Gene Description thyroid hormone receptor interactor 6

Omim ID [602933](#)

Gene Ontology [Hyperlink](#)

Gene Summary This gene is a member of the zyxin family and encodes a protein with three LIM zinc-binding domains. This protein localizes to focal adhesion sites and along actin stress fibers. Recruitment of this protein to the plasma membrane occurs in a lysophosphatidic acid (LPA)-dependent manner and it regulates LPA-induced cell migration. Alternatively spliced variants which encode different protein isoforms have been described; however, not all variants have been fully characterized. [provided by RefSeq]

Other Designations OPA-interacting protein 1|thyroid receptor-interacting protein 6|zyxin related protein 1