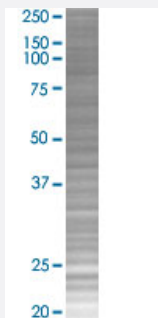


TRAF3 293T Cell Transient Overexpression Lysate(Denatured)

Catalog # H00007187-T02

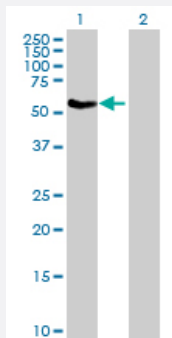
Size 100 uL

Applications



SDS-PAGE Gel

TRAF3 transfected lysate.



Western Blot

Lane 1: TRAF3 transfected lysate (64.50 KDa)

Lane 2: Non-transfected lysate.

Specification

Transfected Cell Line	293T
Plasmid	pCMV-TRAF3 full-length
Host	Human
Theoretical MW (kDa)	64.5
Interspecies Antigen Sequence	Mouse (96); Rat (95)

Quality Control Testing

Transient overexpression cell lysate was tested with Anti-TRAF3 antibody ([H00007187-B01P](#)) by Western Blots.
SDS-PAGE Gel
TRAF3 transfected lysate.
Western Blot
Lane 1: TRAF3 transfected lysate (64.50 KDa)
Lane 2: Non-transfected lysate.

Storage Buffer

1X Sample Buffer (50 mM Tris-HCl, 2% SDS, 10% glycerol, 300 mM 2-mercaptoethanol, 0.01% Bromophenol blue)

Storage Instruction

Store at -80°C. Aliquot to avoid repeated freezing and thawing.

Applications

- Western Blot

Gene Info — TRAF3

Entrez GeneID

[7187](#)

GeneBank Accession#

[NM_003300](#)

Protein Accession#

[NP_003291.2](#)

Gene Name

TRAF3

Gene Alias

CAP-1, CD40bp, CRAF1, LAP1

Gene Description

TNF receptor-associated factor 3

Omim ID

[601896](#)

Gene Ontology

[Hyperlink](#)

Gene Summary

The protein encoded by this gene is a member of the TNF receptor associated factor (TRAF) protein family. TRAF proteins associate with, and mediate the signal transduction from, members of the TNF receptor (TNFR) superfamily. This protein participates in the signal transduction of CD40, a TNFR family member important for the activation of the immune response. This protein is found to be a critical component of the lymphotoxin-beta receptor (LTbetaR) signaling complex, which induces NF-kappaB activation and cell death initiated by LTbeta ligation. Epstein-Barr virus encoded latent infection membrane protein-1 (LMP1) can interact with this and several other members of the TRAF family, which may be essential for the oncogenic effects of LMP1. Three alternatively spliced transcript variants encoding two distinct isoforms have been reported. [provided by RefSeq]

Other Designations

CD40 associated protein 1|CD40 binding protein|CD40 receptor associated factor 1|LMP1 associated protein

Pathway

- [Pathways in cancer](#)
- [Small cell lung cancer](#)
- [Toll-like receptor signaling pathway](#)

Disease

- [Alzheimer disease](#)
- [Cardiovascular Diseases](#)
- [Diabetes Complications](#)
- [Diabetes Mellitus](#)
- [Edema](#)
- [Genetic Predisposition to Disease](#)
- [HIV Infections](#)
- [Metabolic Syndrome X](#)
- [Neoplasms](#)
- [Osteoporosis](#)