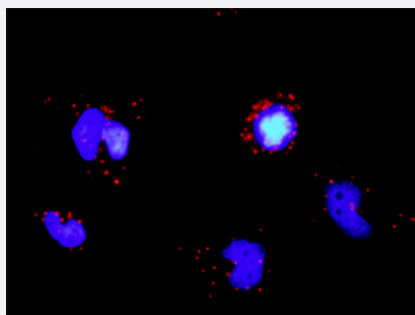


TRAF3 monoclonal antibody (M01), clone 1C5

Catalog # H00007187-M01

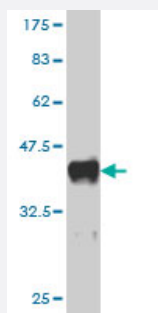
Size 100 ug

Applications



In situ Proximity Ligation Assay (Cell)

Proximity Ligation Analysis of protein-protein interactions between TRAF5 and TRAF3. HeLa cells were stained with anti-TRAF5 rabbit purified polyclonal 1:1200 and anti-TRAF3 mouse monoclonal antibody 1:50. Each red dot represents the detection of protein-protein interaction complex, and nuclei were counterstained with DAPI (blue).



Western Blot detection against Immunogen (38.17 KDa) .

Specification

Product Description	Mouse monoclonal antibody raised against a partial recombinant TRAF3.
Immunogen	TRAF3 (NP_663777, 298 a.a. ~ 410 a.a) partial recombinant protein with GST tag. MW of the GST tag alone is 26 KDa.
Sequence	FEIEIERQKEMLRNNE SKILHLQRVIDSQA EKLKELDK EIRPFRQNWEEADSMKSSVESLQNRVTE LESVDKSAGQVARNTGLLESQLSRHDQMLSVHDIRLADMDLRFQVLE
Host	Mouse
Reactivity	Human

Interspecies Antigen Sequence	Mouse (99); Rat (99)
Isotype	IgG2a Kappa
Quality Control Testing	Antibody Reactive Against Recombinant Protein. Western Blot detection against Immunogen (38.17 KDa) .
Storage Buffer	In 1x PBS, pH 7.4
Storage Instruction	Store at -20°C or lower. Aliquot to avoid repeated freezing and thawing.

Applications

- Western Blot (Recombinant protein)

[Protocol Download](#)

- ELISA

- In situ* Proximity Ligation Assay (Cell)

Proximity Ligation Analysis of protein-protein interactions between TRAF5 and TRAF3. HeLa cells were stained with anti-TRAF5 rabbit purified polyclonal 1:1200 and anti-TRAF3 mouse monoclonal antibody 1:50. Each red dot represents the detection of protein-protein interaction complex, and nuclei were counterstained with DAPI (blue).

Gene Info — TRAF3

Entrez GeneID	7187
GeneBank Accession#	NM_145725
Protein Accession#	NP_663777
Gene Name	TRAF3
Gene Alias	CAP-1, CD40bp, CRAF1, LAP1
Gene Description	TNF receptor-associated factor 3
Omim ID	601896
Gene Ontology	Hyperlink

Gene Summary

The protein encoded by this gene is a member of the TNF receptor associated factor (TRAF) protein family. TRAF proteins associate with, and mediate the signal transduction from, members of the TNF receptor (TNFR) superfamily. This protein participates in the signal transduction of CD40, a TNFR family member important for the activation of the immune response. This protein is found to be a critical component of the lymphotoxin-beta receptor (LTbetaR) signaling complex, which induces NF-kappaB activation and cell death initiated by LTbeta ligation. Epstein-Barr virus encoded latent infection membrane protein-1 (LMP1) can interact with this and several other members of the TRAF family, which may be essential for the oncogenic effects of LMP1. Three alternatively spliced transcript variants encoding two distinct isoforms have been reported. [provided by RefSeq]

Other Designations

CD40 associated protein 1|CD40 binding protein|CD40 receptor associated factor 1|LMP1 associated protein

Pathway

- [Pathways in cancer](#)
- [Small cell lung cancer](#)
- [Toll-like receptor signaling pathway](#)

Disease

- [Alzheimer disease](#)
- [Cardiovascular Diseases](#)
- [Diabetes Complications](#)
- [Diabetes Mellitus](#)
- [Edema](#)
- [Genetic Predisposition to Disease](#)
- [HIV Infections](#)
- [Metabolic Syndrome X](#)
- [Neoplasms](#)
- [Osteoporosis](#)