

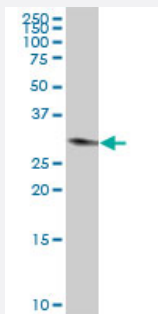
MaxPab®

TPSAB1 purified MaxPab mouse polyclonal antibody (B02P)

Catalog # H00007177-B02P

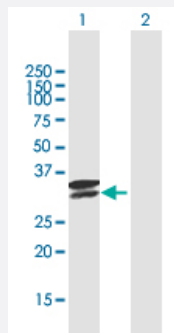
Size 50 ug

Applications



Western Blot (Tissue lysate)

TPSAB1 MaxPab polyclonal antibody. Western Blot analysis of TPSAB1 expression in human kidney.



Western Blot (Transfected lysate)

Western Blot analysis of TPSAB1 expression in transfected 293T cell line ([H00007177-T02](#)) by TPSAB1 MaxPab polyclonal antibody.

Lane 1: TPSAB1 transfected lysate(30.25 KDa).

Lane 2: Non-transfected lysate.

Specification

Product Description

Mouse polyclonal antibody raised against a full-length human TPSAB1 protein.

Immunogen

TPSAB1 (NP_003285, 1 a.a. ~ 275 a.a) full-length human protein.

Sequence

MLNLLLLALPVLASRAYAAPAGQALQRVGIVGGQEAPRSKWPWQVSLRVHGPYWMHFCGGSLI
HPQWVLTAHCVGPDVKDLAALRVQLREQHLYYQDQLLPVSRIVHPQFYTAQIGADIALEELPV
NVSSHVHTVTLPPASETFPPGMPCWVTGWGDVDNDERLPPFPLKQVKVPIMENHICDAKYHLG
AYTGDDVRMRDDMLCAGNTRRDSCQGDSGGPLVCKVNGTWLQAGVVSWECECAQPNRPGYT
RVITYLDWIHHYVPKKP

Host

Mouse

Reactivity	Human
Interspecies Antigen Sequence	Mouse (78); Rat (76)
Quality Control Testing	Antibody reactive against mammalian transfected lysate.
Storage Buffer	In 1x PBS, pH 7.4
Storage Instruction	Store at -20°C or lower. Aliquot to avoid repeated freezing and thawing.

Applications

- Western Blot (Tissue lysate)

TPSAB1 MaxPab polyclonal antibody. Western Blot analysis of TPSAB1 expression in human kidney.

[Protocol Download](#)

- Western Blot (Transfected lysate)

Western Blot analysis of TPSAB1 expression in transfected 293T cell line ([H00007177-T02](#)) by TPSAB1 MaxPab polyclonal antibody.

Lane 1: TPSAB1 transfected lysate(30.25 KDa).

Lane 2: Non-transfected lysate.

[Protocol Download](#)

Gene Info — TPSAB1

Entrez GeneID	7177
GeneBank Accession#	NM_003294
Protein Accession#	NP_003285
Gene Name	TPSAB1
Gene Alias	MCP7, TPS1, TPS2, TPSB1
Gene Description	tryptase alpha/beta 1
Omim ID	191080
Gene Ontology	Hyperlink

Gene Summary

Tryptases comprise a family of trypsin-like serine proteases, the peptidase family S1. Tryptases are enzymatically active only as heparin-stabilized tetramers, and they are resistant to all known endogenous proteinase inhibitors. Several tryptase genes are clustered on chromosome 16p13.3. These genes are characterized by several distinct features. They have a highly conserved 3' UTR and contain tandem repeat sequences at the 5' flank and 3' UTR which are thought to play a role in regulation of the mRNA stability. These genes have an intron immediately upstream of the initiator Met codon, which separates the site of transcription initiation from protein coding sequence. This feature is characteristic of tryptases but is unusual in other genes. The alleles of this gene exhibit an unusual amount of sequence variation, such that the alleles were once thought to represent two separate genes, alpha and beta 1. Beta tryptases appear to be the main isoenzymes expressed in mast cells; whereas in basophils, alpha tryptases predominate. Tryptases have been implicated as mediators in the pathogenesis of asthma and other allergic and inflammatory disorders. [provided by RefSeq]

Other Designations

lung tryptase|mast cell protease II|mast cell tryptase|pituitary tryptase|skin tryptase|tryptase 1|tryptase II|tryptase alpha II|tryptase beta 1|tryptase beta II|tryptase, alpha|tryptase-III

Disease

- [Hypersensitivity](#)
- [Mastocytosis](#)