

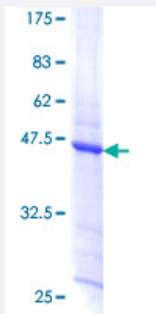
Full-Length

## TPD52L1 (Human) Recombinant Protein (P01)

Catalog # H00007164-P01

Size 25 ug, 10 ug

### Applications



### Specification

<b>Product Description</b>	Human TPD52L1 full-length ORF ( AAH02375.1, 1 a.a. - 144 a.a.) recombinant protein with GST-tag at N-terminal.
<b>Sequence</b>	MEAAQAGLLETEPLQGTDEDAVASADFSSMLSEEEKEELKAELVQLEDEITTLRQVLSAKERHL VEIKQKLG MNLMNELKQNF SKSWHDMQTTTAYKKTHETLSHAGQKATAAFS NVGTAISKKFGDM SYSIRHSISMPAMRRK
<b>Host</b>	Wheat Germ (in vitro)
<b>Theoretical MW (kDa)</b>	41.47
<b>Interspecies Antigen Sequence</b>	Mouse (95); Rat (93)
<b>Preparation Method</b>	<a href="#">in vitro wheat germ expression system</a>
<b>Purification</b>	Glutathione Sepharose 4 Fast Flow
<b>Quality Control Testing</b>	12.5% SDS-PAGE Stained with Coomassie Blue.
<b>Storage Buffer</b>	50 mM Tris-HCl, 10 mM reduced Glutathione, pH=8.0 in the elution buffer.
<b>Storage Instruction</b>	Store at -80°C. Aliquot to avoid repeated freezing and thawing.

## Note

Best use within three months from the date of receipt of this protein.

## Applications

- Enzyme-linked Immunoabsorbent Assay
- Western Blot (Recombinant protein)
- Antibody Production
- Protein Array

## Gene Info — TPD52L1

Entrez GeneID [7164](#)

GeneBank Accession# [BC002375.1](#)

Protein Accession# [AAH02375.1](#)

Gene Name TPD52L1

Gene Alias D53, MGC8556, TPD52L2, hD53

Gene Description tumor protein D52-like 1

Omim ID [604069](#)

Gene Ontology [Hyperlink](#)

**Gene Summary** This gene encodes a member of the tumor protein D52 (TPD52) family. The encoded protein contains a coiled-coil domain and may form homo- or hetero-dimer with TPD52 family members. The protein is reported to be involved in cell proliferation and calcium signaling. It also interacts with the mitogen-activated protein kinase kinase kinase 5 (MAP3K5/ASK1) and positively regulates MAP3K5-induced apoptosis. Multiple alternatively spliced transcript variants have been observed, but the full-length nature of some variants has not yet been determined. [provided by RefSeq]

**Other Designations** OTTHUMP00000017133|OTTHUMP00000017135|OTTHUMP00000017136|tumor protein D52-like 2|tumor protein D53