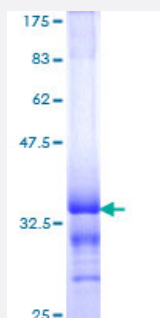


TOP1 (Human) Recombinant Protein (Q01)

Catalog # H00007150-Q01

Size 25 ug, 10 ug

Applications



Specification

Product Description	Human TOP1 partial ORF (NP_003277, 692 a.a. - 765 a.a.) recombinant protein with GST-tag at N-terminal.
Sequence	QRLEEQLMKLEVQATDREENKQIALGTSKLNLYDPRITVAWCKKKGVPPIEKIYNKTQREKFAWAID MADEDYEF
Host	Wheat Germ (in vitro)
Theoretical MW (kDa)	33.88
Interspecies Antigen Sequence	Mouse (99); Rat (99)
Preparation Method	in vitro wheat germ expression system
Purification	Glutathione Sepharose 4 Fast Flow
Quality Control Testing	12.5% SDS-PAGE Stained with Coomassie Blue.
Storage Buffer	50 mM Tris-HCl, 10 mM reduced Glutathione, pH=8.0 in the elution buffer.
Storage Instruction	Store at -80°C. Aliquot to avoid repeated freezing and thawing.
Note	Best use within three months from the date of receipt of this protein.

Applications

- Enzyme-linked Immunoabsorbent Assay
- Western Blot (Recombinant protein)
- Antibody Production
- Protein Array

Gene Info — TOP1

Entrez GeneID [7150](#)

GeneBank Accession# [NM_003286](#)

Protein Accession# [NP_003277](#)

Gene Name TOP1

Gene Alias TOPI

Gene Description topoisomerase (DNA) I

Omim ID [126420](#)

Gene Ontology [Hyperlink](#)

Gene Summary This gene encodes a DNA topoisomerase, an enzyme that controls and alters the topologic state of DNA during transcription. This enzyme catalyzes the transient breaking and rejoining of a single strand of DNA which allows the strands to pass through one another, thus altering the topology of DNA. This gene is localized to chromosome 20 and has pseudogenes which reside on chromosomes 1 and 22. [provided by RefSeq]

Other Designations DNA topoisomerase I|OTTHUMP00000031713|type I DNA topoisomerase

Disease

- [Neoplasms](#)
- [Neutropenia](#)