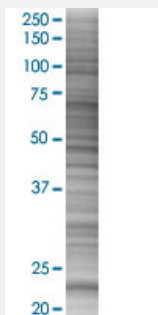


TNNI2 293T Cell Transient Overexpression Lysate(Denatured)

Catalog # H00007136-T01

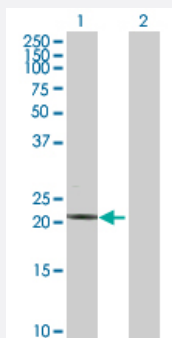
Size 100 uL

Applications



SDS-PAGE Gel

TNNI2 transfected lysate.



Western Blot

Lane 1: TNNI2 transfected lysate (21.30 KDa)

Lane 2: Non-transfected lysate.

Specification

Transfected Cell Line 293T

Plasmid pCMV-TNNI2 full-length

Host Human

Theoretical MW (kDa) 21.3

Quality Control Testing Transient overexpression cell lysate was tested with Anti-TNNI2 antibody ([H00007136-D01P](#)) by Western Blots.
 SDS-PAGE Gel
 TNNI2 transfected lysate.
 Western Blot
 Lane 1: TNNI2 transfected lysate (21.30 KDa)
 Lane 2: Non-transfected lysate.

Storage Buffer	1X Sample Buffer (50 mM Tris-HCl, 2% SDS, 10% glycerol, 300 mM 2-mercaptoethanol, 0.01% Bromophenol blue)
Storage Instruction	Store at -80°C. Aliquot to avoid repeated freezing and thawing.

Applications

- Western Blot

Gene Info — TNNI2

Entrez GeneID	7136
GeneBank Accession#	NM_003282
Protein Accession#	NP_003273.1
Gene Name	TNNI2
Gene Alias	AMCD2B, DA2B, FSSV
Gene Description	troponin I type 2 (skeletal, fast)
Omim ID	191043 601680
Gene Ontology	Hyperlink

Gene Summary	<p>This gene encodes a fast-twitch skeletal muscle protein, a member of the troponin I gene family, and a component of the troponin complex including troponin T, troponin C and troponin I subunits. The troponin complex, along with tropomyosin, is responsible for the calcium-dependent regulation of striated muscle contraction. Mouse studies show that this component is also present in vascular smooth muscle and may play a role in regulation of smooth muscle function. In addition to muscle tissues, this protein is found in corneal epithelium, cartilage where it is an inhibitor of angiogenesis to inhibit tumor growth and metastasis, and mammary gland where it functions as a co-activator of estrogen receptor-related receptor alpha. This protein also suppresses tumor growth in human ovarian carcinoma. Mutations in this gene cause myopathy and distal arthrogryposis type 2B. Alternatively spliced transcript variants have been found for this gene. [provided by RefSeq]</p>
--------------	---

Other Designations	OTTHUMP00000014141 OTTHUMP00000014142 troponin I fast twitch 2 troponin I, fast-twitch skeletal muscle isoform troponin I, skeletal, fast
--------------------	---

Disease

- [Cardiovascular Diseases](#)

- [Diabetes Mellitus](#)
- [Edema](#)