

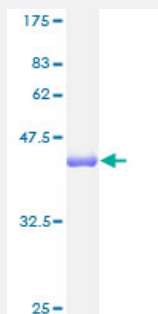
Full-Length

# TNNC1 (Human) Recombinant Protein (P01)

Catalog # H00007134-P01

Size 25 ug, 10 ug

## Applications



## Specification

Product Description	Human TNNC1 full-length ORF ( AAH30244, 1 a.a. - 161 a.a.) recombinant protein with GST-tag at N-terminal.
Sequence	MDDIYKAAVEQLTEEQKNEFKAAFDIFVLGAEDGCISTKELGKVMRMLGQNPTPEELQEMIDEVD EDGSGTVDFDEFLVMMVRCMKDDSKGKSEEELSDLFRMFCKNADGYIDLDELKIMLQATGETITE DDIEELMKDGDKNNDGRIDYDEFLEFMKGVE
Host	Wheat Germ (in vitro)
Theoretical MW (kDa)	43.45
Interspecies Antigen Sequence	Mouse (99); Rat (99)
Preparation Method	<a href="#">in vitro wheat germ expression system</a>
Purification	Glutathione Sepharose 4 Fast Flow
Quality Control Testing	12.5% SDS-PAGE Stained with Coomassie Blue.
Storage Buffer	50 mM Tris-HCl, 10 mM reduced Glutathione, pH=8.0 in the elution buffer.
Storage Instruction	Store at -80°C. Aliquot to avoid repeated freezing and thawing.

## Note

Best use within three months from the date of receipt of this protein.

## Applications

- Enzyme-linked Immunoabsorbent Assay
- Western Blot (Recombinant protein)
- Antibody Production
- Protein Array

## Gene Info — TNNC1

Entrez GeneID	<a href="#">7134</a>
GeneBank Accession#	<a href="#">BC030244</a>
Protein Accession#	<a href="#">AAH30244</a>
Gene Name	TNNC1
Gene Alias	CMD1Z, TNC, TNNC
Gene Description	troponin C type 1 (slow)
Omim ID	<a href="#">191040</a>
Gene Ontology	<a href="#">Hyperlink</a>
Gene Summary	Troponin is a central regulatory protein of striated muscle contraction, and together with tropomyosin, is located on the actin filament. Troponin consists of 3 subunits: TnI, which is the inhibitor of actomyosin ATPase; TnT, which contains the binding site for tropomyosin; and TnC, the protein encoded by this gene. The binding of calcium to TnC abolishes the inhibitory action of TnI, thus allowing the interaction of actin with myosin, the hydrolysis of ATP, and the generation of tension. Mutations in this gene are associated with cardiomyopathy dilated type 1Z. [provided by RefSeq]
Other Designations	cardiac troponin C slow twitch skeletal/cardiac muscle troponin C troponin C, slow troponin C1, slow

## Pathway

- [Calcium signaling pathway](#)
- [Cardiac muscle contraction](#)
- [Hypertrophic cardiomyopathy \(HCM\)](#)

## Disease

- [Cardiomyopathy](#)
- [Genetic Predisposition to Disease](#)